



## GENERAL PRODUCTS 2021

<u>CONSUMER UNITS</u>	<u>1</u>
<u>COMPONENTS</u>	<u>5</u>
<u>METAL CONSUMER UNITS</u>	<u>22</u>
<u>ENCLOSURES</u>	<u>27</u>
<u>ENCLOSED SWITCHGEAR</u>	<u>33</u>
<u>EV CHARGING</u>	<u>41</u>
<u>CEE POWER CONNECTORS</u>	<u>49</u>

MADE IN  
**EU**  
MANUFACTURED  
IN THE EU

  
COMPREHENSIVE  
WARRANTIES

**80**YR  
80 YEARS  
OF EXPERTISE

# TERMS & CONDITIONS OF SALE

## 1. DEFINITIONS

In these terms and conditions the following words shall have the following meanings:-

'The Company' shall mean Garo Electric Ltd and its successors in Title. 'The Customer' shall mean the person, firm or company offering to purchase goods from the Company and its successors in Title. 'Goods' shall mean the articles and services which are the subject matter of the contract between the Company and the Customer.

## 2. GENERAL

All business undertaken by the Company is undertaken on the terms and conditions herein contained and any variations will only be binding on the parties hereto if such variation is in writing and signed on behalf of the Company. Any order placed by a customer is deemed to be upon the terms and conditions herein contained.

## 3. SETTLEMENT TERMS

All items are strictly nett and due for payment 30 days after date of the invoice unless otherwise specified in writing by the Company. The Customer shall not be entitled to make any deductions whether by reason of set-off or for any other reason.

## 4. PRICES – EXCLUSIVE OF V.A.T.

All quotations are given at current prices, but are subject to alterations without notice in accordance with prices ruling at time of delivery. The Company shall be entitled to recover from the Customer by way of addition to prices, such amounts which the Company may become liable to pay in respect of Value Added Tax or other legally imposed Tax in relation to the goods, also currency and other Surcharges will be charged, where applicable, at the rate ruling at date of dispatch.

## 5. CARRIAGE

The Company normally makes no charge for delivery from its warehouse within the usual van delivery area when delivered by its vehicles, but reserves the right to charge carriage on deliveries by whatever means of transport outside such usual delivery areas. Where the goods are specially ordered from manufacturers, the Company reserves the right to pass on any carriage and customs clearance charges as may arise.

## 6. GUARANTEE

The Company gives no guarantee or warranty whether expressed or implied in relation to the Goods but the Company shall do everything within its power to protect the Customers interests and to that extent shall assign to the Customer the benefit of such guarantee or warranty (if any) as may be given by the manufacturers in relation to the Goods. The Company does not accept liability for any consequential damage howsoever arising from the purchase by the Customer of the Goods whether the same may arise out of any use of the Goods or the installation of the same.

## 7. DELIVERY DATES

Whilst the Company shall always do its best to comply with a date quoted for delivery of goods it accepts no responsibility for loss or damage arising from failure to comply.

## 8. RETURNS

Goods correctly supplied may not be returned without the Company's agreement in writing. Goods so returned must be consigned Carriage Paid and accompanied by a Packing Note stating the Company's Delivery Note Number. The Company reserves the right to make a re-stocking charge. Goods will be accepted only if returned in perfect condition and in unopened and perfect packaging. A clear and authorised signature must be obtained from the Company.

### 8.(i) CLAIMS

(a) Any claim relating to goods delivered under this contract shall be notified to the Company in writing within seven (7) days from the date on which the said goods are received by the Customer or his agent and the Customer shall afford the Company reasonable facilities for examining the goods before they have been disposed of, or in any way altered. All goods damaged in transit and accepted in that condition by the Customer shall not be the subject of any claim hereunder.

(b) Any claim or claims in respect of goods delivered under this contract shall not be grounds for withholding payment of accounts and shall not give any right of set-off against payment due to the Company.

(c) No claim for damages to or shortages of goods during transit will be considered unless the Company and the carriers are advised in writing within seven (7) days of delivery of goods and no claim for non-delivery will be considered unless the Company and the carriers are advised within ten (10) days from date of dispatch of goods.

## 9. PACKING AND TRANSIT

Goods received damaged should be signed for as 'Damaged', otherwise claims in this regard cannot be submitted. Customers are asked to note the prescribed periods for notification of damage to or shortage and non-delivery of goods and the submission of claims in respect thereof. The Company shall not be liable for any loss resulting from Customers' failure to comply with the requirements of the Railway Executive, Haulage Companies and Post Regulations and the Customer undertakes to indemnify the Company against such loss (if any).

## 10. ORDERS

Written confirmation of telephone orders should be clearly marked as such, otherwise the Company cannot be responsible should the order be duplicated. The Company reserves the right to refuse any order placed, or to refuse cancellation of any order, or to suspend delivery of any order from time to time, if the account is in arrears.

## 11. WAIVER

A waiver by the Company at any term or condition shall not constitute a general waiver of such term or condition.

## 12. OWNERSHIP

(a) The property in the goods shall not be deemed to have passed to the Customer until the goods and any debts owing to the Company whether arising from this contract or otherwise have been paid for and discharged in full.

(b) In the meantime the goods shall remain the sole property of the Company and the Customer shall be bailee thereof.

(c) If the Customer fails to pay any sums due in accordance with the terms of this agreement the Company may after giving seven days notice in writing to the Customer take possession of the goods and may for that purpose, by himself his servants or agents, enter upon any land or premises on or in which the goods or any part of them are believed by the Company to be situated.

(d) The Customer agrees not to sell, assign, sub-let or otherwise part with the possession of the goods until the property in the goods passes to the Customer in accordance with the provisions of paragraphs (a) and (b)

(e) The risk of any loss or damage to or deterioration of the goods from whatever cause shall be borne by the Customer from when the Customer, his servants, licensees or agents receive possession of the goods

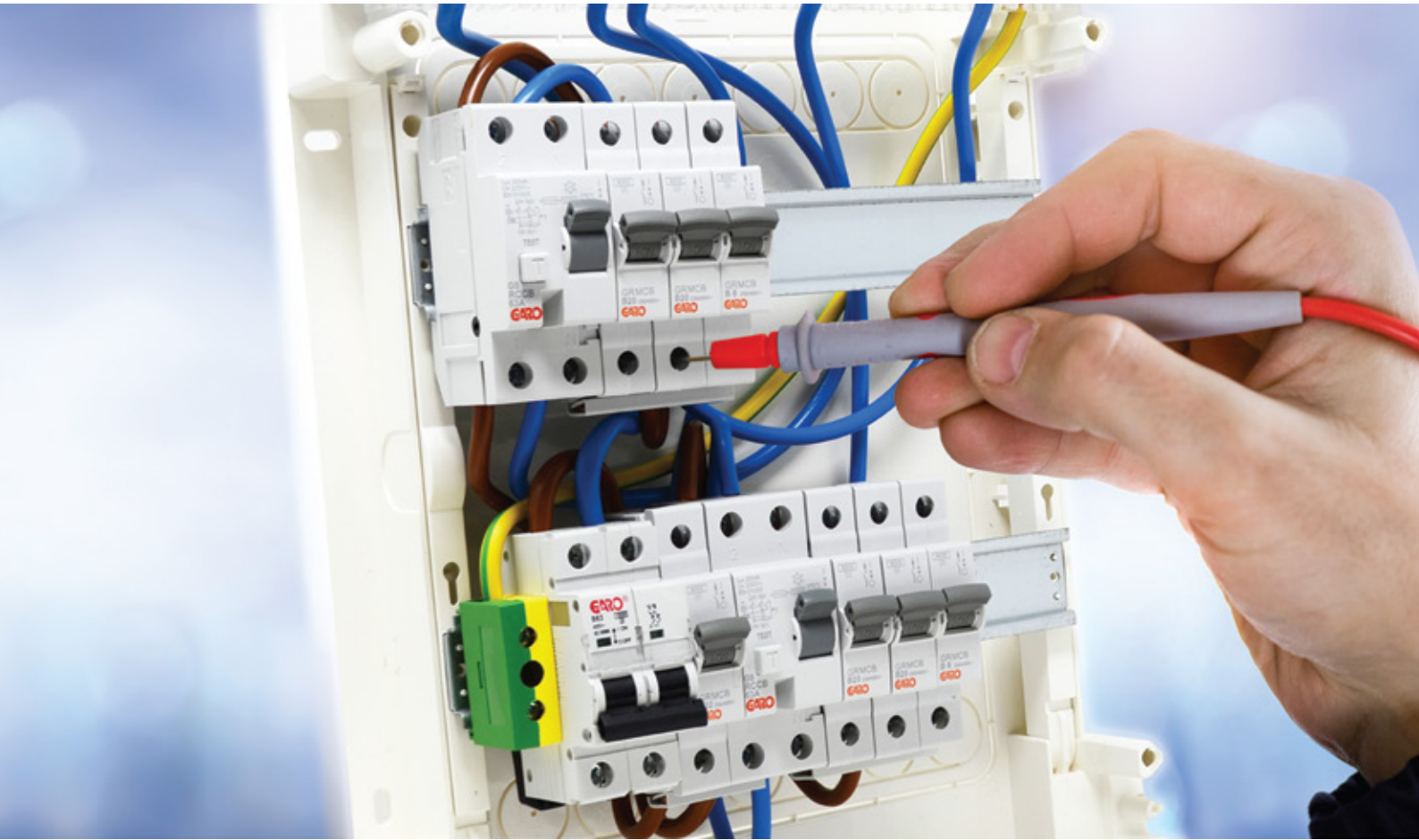
(f) If payment is overdue and not discharged, the Company may without prejudice to any of its rights and remedies and with due warning to the Customer by registered mail, recover and resell any or all such goods and may enter upon the Customer's premises for that purpose. Recovery costs will become the liability of the Customer and shall include all labour, tools, plant hire and all other relevant charges-costs.

## 13. CHOICE OF LAW

These conditions and the contract shall be subject to and construed in accordance with the laws of the Republic of Ireland. The Customer submits to the jurisdiction of the Irish Courts of Law.

# TABLE OF CONTENTS

<b>NON-METALLIC CONSUMER UNIT</b>	<b>1</b>	<b>ENCLOSURES</b>	<b>27</b>
Consumer Units IP41 Surface	2	Argenta Metal Enclosures IP65	28
Consumer Units Flush	3	Polyester Enclosures IP66	29
Shower Priority & Non Priority	3	Metal Enclosures Flush	30
Dimensions	3	Junction Boxes IP67	30
Consumer Units Accessories	4	Inspection Windows Plastic IP54	30
		Plastic Enclosures	31
		Distribution Enclosures IP40 - IP41	32
<b>COMPONENTS</b>	<b>5</b>	<b>ENCLOSED SWITCHGEAR</b>	<b>33</b>
Miniature Circuit Breaker	6	Safety Switches	34
Residual Current Circuit Breaker (RCD)	12	AC and SOLAR DC Switches & Contactors	34
Residual Current Breaker (RCBO)	13	Isolator Switches Enclosed IP53 IP55 IP65	35
Modular Isolator & Changeover Switches	15	Fuse Switches BS Type IP55	36
Timers	16	Fuse Switches NH Type IP65 IP55	37
Multifunction Timer	16	Changeover Switches	38
Test Relays & Time Lag Switches	16	Metal Clad Switchgear /ESB CT Chamber	38
Shower Relays + Shower Timer	16		
Kilowatt Hour Meters	17	<b>ISOLATORS, C/O, FUSES</b>	
Contactors	17	Isolators & Changeover Switches	15
Switch Fuses DO Type	17	Disconnectors	39
Surge Protection Devices	18	Fuses & Fuse Bases	40
Busbar	19		
Bell Transformer - Bell - Chime	19	<b>ELECTRIC VEHICLE CHARGING</b>	<b>41</b>
Accessories	20	Domestic Wall Chargers	42
Distribution Blocks	20	EV Distribution Boards	42
Terminal Blocks	21	Commercial Wall Chargers	43
Group Link Boxes	21	Dual Wall Chargers	44
		Pillar Chargers	45
<b>18TH EDITION METAL CONSUMER UNIT</b>	<b>22</b>	EV Accessories	46
IP41 Surface Metal with Isolator	23	Fast DC Chargers	47
IP41 Surface Metal with RCCB	23	Billing Back Office Solutions	48
IP41 Surface Metal with Isolator & RCCB	24		
Garage Boards	24	<b>CEE POWER CONNECTORS</b>	<b>49</b>
IP41 Surface Metal with Surge Protection	24	CEE Fast Finder	50
Priority & Non-Priority Shower Boards	25	Plugtops	51
Electrical Vehicle Distribution Boards	25	Couplers	54
Consumer Units Accessories	25	Sockets & Inlets - Wall Mounting	56
TPN Distribution Boards	26	3 Way - Connection Outlets	60
Long RCBO 10kA	26	16A to 13A BS Adaptor	60
		Panel Mounting Outlets & Inlet	61
		Combination Units	65
		Interlocked Socket Outlets	66
		Pro Scene Black Plugs & Couplers	68



# CONSUMER UNITS



IS 10101:2020  
COMPLIANT



CE CERTIFIED



ENHANCED  
PROTECTION



COMPREHENSIVE  
WARRANTIES

**NON-METALLIC CONSUMER UNITS IP41 WITH MAIN MCB TYPE B 10kA**

**Main MCB Type B 10kA**

Item	Enclosure	Total Modules	Free Modules	Incoming	RCCB	MCB	Surge	Trade Price
G13B-7A	G1-13	14	1	MCB 63A	2 x 40A	7	No	173.56
G18B-7A	G1-18	18	5	MCB 63A	2 x 63A	7	Option	176.11
G26B-7A	G2-26	28	15	MCB 63A	2 x 63A	7	Option	186.63
G36B-7A	G2-36	36	23	MCB 63A	2 x 63A	7	Option	192.19
G39B-7A	G3-39	42	29	MCB 63A	2 x 63A	7	Option	216.56



G131-7A

**Main MCB Type B 10kA & Surge Protection**

Item	Enclosure	Total Modules	Free Modules	Incoming	RCCB	MCB	Surge	Trade Price
G18B-7AS	G1-18	18	3	MCB 63A	2 x 63A	7	Yes	214.29
G26B-7AS	G2-26	28	13	MCB 63A	2 x 63A	7	Yes	245.73
G36B-7AS	G2-36	36	21	MCB 63A	2 x 63A	7	Yes	255.60
G39B-7AS	G3-39	42	27	MCB 63A	2 x 63A	7	Yes	276.33



**NON-METALLIC SURFACE CONSUMER UNITS C/W MAIN ISOLATOR 100AMP**

**Main ISOLATOR 100A**

Item	Enclosure	Total Modules	Free Modules	Incoming	RCCB	MCB	Surge	Trade Price
G131-7A	G1-13	14	1	Isolator	2 x 40A	7	No	173.56
G181-7A	G1-18	18	5	Isolator	2 x 63A	7	Option	176.11
G261-7A	G2-26	28	15	Isolator	2 x 63A	7	Option	186.63
G361-7A	G2-36	36	23	Isolator	2 x 63A	7	Option	192.19
G391-7A	G3-39	42	29	Isolator	2 x 63A	7	Option	216.56



G181-7AS

**Main ISOLATOR 100A & Surge Protection**

Item	Enclosure	Total Modules	Free Modules	Incoming	RCCB	MCB	Surge	Trade Price
G181-7AS	G1-18	18	3	Isolator	2 x 63A	7	Yes	214.29
G261-7AS	G2-26	28	13	Isolator	2 x 63A	7	Yes	245.13
G361-7AS	G2-36	36	21	Isolator	2 x 63A	7	Yes	255.60
G391-7AS	G3-39	42	27	Isolator	2 x 63A	7	Yes	275.73

**NON-METALLIC MAIN OVERCURRENT PROTECTIVE DEVICE IP55 - Single Phase**

Item	Enclosure	Total Modules	Free Modules	Incoming Device	Surge	Trade Price
G4-63B	CDN4G	4	3	MCB 63A 10KA type B	No	28.68
G4-80C	CDN4G	4	2	MCB 80A 10KA type C	No	44.13
G4-100C	CDN4G	4	2	MCB 100A 10KA type C	No	49.64



G4-63B

## NON-METALLIC FLUSH CONSUMER UNITS C/W MAIN MCB TYPE B 10KA

### Main MCB Type B 10kA

Item	Enclosure	Total Modules	Free Modules	Incoming	RCCB	MCB	Surge	Trade Price
K12B-7A	SIL14PO-PH	14	1	MCB 63A	2 x 40A	7	No	209.63
K24B-7A	SIL28PO-PH	28	15	MCB 63A	2 x 63A	7	Option	228.16
K36B-7A	SIL42PO-PH	42	29	MCB 63A	2 x 63A	7	Option	253.10



K24B-7A

### Main MCB Type B 10kA & Surge Protection

Item	Enclosure	Total Modules	Free Modules	Incoming	RCCB	MCB	Surge	Trade Price
K24B-7AS	SIL28PO-PH	28	13	MCB 63A	2 x 63A	7	Yes	286.46
K36B-7AS	SIL42PO-PH	42	27	MCB 63A	2 x 63A	7	Yes	312.20

## NON-METALLIC FLUSH CONSUMER UNITS C/W MAIN ISOLATOR 100AMP

### Main ISOLATOR 100A & Surge Protection

Item	Enclosure	Total Modules	Free Modules	Incoming	RCCB	MCB	Surge	Trade Price
K12I-7A	SIL14PO-PH	14	1	Isolator	2 x 40A	7	No	209.63
K24I-7A	SIL28PO-PH	28	15	Isolator	2 x 63A	7	Option	227.56
K36I-7A	SIL42PO-PH	42	29	Isolator	2 x 63A	7	Option	252.50



K24I-7AS

### Main ISOLATOR 100A & Surge Protection

Item	Enclosure	Total Modules	Free Modules	Incoming	RCCB	MCB	Surge	Trade Price
K24I-7AS	SIL28PO-PH	28	13	Isolator	2 x 63A	7	Yes	285.86
K36I-7AS	SIL42PO-PH	42	27	Isolator	2 x 63A	7	Yes	311.60

## SHOWER BOARDS - Priority & Non-Priority

Item	Enclosure	Incoming	Description	Relays	Timer	Trade Price
CV8-PS1	CV8PO-RR (sfc)	40A RCBO	PRIORITY	1	0	161.48
CV8-NPS	CV8PO-RR (sfc)	40A RCBO	NON PRIORITY	2	0	242.23
CV12-NPST	CV12PO-RR (sfc)	40A RCBO	NON PRIORITY	2	1	313.67
G13-3NPS	G1-13 (sfc)	40A RCBO	NON PRIORITY	3	0	450.02



CV8-NPS

### DIMENSIONS

Item	Modules	Rows	Internal Width	Internal Height	Internal Depth	External Width	External Height	External Depth
CDN4G	4	1				84	174	111
G1-13	14	1				300	245	125
G1-18	18	1				395	235	110
G2-26	26	2				300	370	125
G2-36	36	2				395	360	110
G3-39	42	3				300	495	125
SIL 14 PO-PH	14	1	314	314	86	368	343	93
SIL 28 PO-PH	28	2	314	414	86	368	443	93
SIL 42 PO-PH	42	3	314	539	86	368	568	93

## Consumer Unit Accessories

### Minature Circuit Breakers Pole 6kA Curve - B

Item	Rated (A)	Packing Units	Trade Price
MCB GRB106	6	12	6.64
MCB GRB110	10	12	6.64
MCB GRB116	16	12	6.64
MCB GRB120	20	12	6.64
MCB GRB125	25	12	6.64
MCB GRB132	32	12	6.64
MCB GRB140	40	12	8.65
MCB GRB150	50	12	14.91
MCB GRB163	63	12	17.62



### Residual Current Breaker with Overcurrent Protection (RCBO) 6kA TYPE A

Item	Rated (A)	Modules	Poles	mA	For cable size mm <sup>2</sup>	Trade Price
RCBO GRB06	6	2	2	30	1-25	29.79
RCBO GRB10	10	2	2	30	1-25	29.79
RCBO GRB16	16	2	2	30	1-25	29.79
RCBO GRB20	20	2	2	30	1-25	29.79
RCBO GRB25	25	2	2	30	1-25	29.79
RCBO GRB32	32	2	2	30	1-25	29.79
RCBO GRB40S	40	2	2	30	1-25	29.79



### Other Accessories

Item	Description	Trade Price
TRAN8-12-24	Bell Transformer 8V 12V 24 V	16.20
GPTT2-300-2-0	Surge Prot 2 Pole Class 11	54.87
G-GPT2	Surge Prot'n Kit Comprising:2 Pole Surge, Earth Cable , Busbar	61.20
G-1L-1000-10ISO	SP Busbar 57 mod 80A 1000mm 10sq	12.92
S-1L-145-10ISO	SP 10mm <sup>2</sup> 8mod busbar	1.71
S-1L-210-10ISO	SP 10mm <sup>2</sup> 12mod 80A busbar	3.40
G-2L-66ML	DP Busbar 2 mod 80A 66mm 10sq	3.09
G-2L-106ML	DP Busbar 3 mod 80A 106mm 10sq	7.37
G-2L-140ML	DP Busbar 4 mod 80A 140mm 10sq	8.85
G-2L-210-10M5	DP Busbar 6 mod 80A 210mm 10sq	4.92
ZA2W	Blanking strip white 1 metre length	6.10
TC-1A	Blanking strip white 4.5 mods	1.02
FBR365	Brown 10 Sq 365mm Cable	3.42
FBL365	Blue 10 Sq 365mm Cable	3.42
FE365	Gm/Ylw 10sq Earth cable 365mm	3.42
BRASS9	9Way Brass Terminal for Cons Unit	2.14
BRASS18	18way Brass Terminal for Garo Cons Unit	5.63
N7	Clip on Neutral Bar 7way 16 sq mm	2.24
E7	Clip on Earth Bar 7way 16 sq mm	2.19
SILN-E	Support 16 Entries Earth and Neutral	15.65



TRAN8-12-24



BLANKING STRIP



N7



E7



# COMPONENTS



IS 10101:2020  
COMPLIANT



CE CERTIFIED



ENHANCED  
PROTECTION



COMPREHENSIVE  
WARRANTIES



## MINIATURE CIRCUIT BREAKER 6kA CURVE B

### 1 Pole 6kA Curve - B

Item	Rated (A)	Packing Units	Trade Price
MCB GRB106	6	12	6.64
MCB GRB110	10	12	6.64
MCB GRB116	16	12	6.64
MCB GRB120	20	12	6.64
MCB GRB125	25	12	6.64
MCB GRB132	32	12	6.64
MCB GRB140	40	12	8.82
MCB GRB150	50	12	15.21
MCB GRB163	63	12	17.97



1-Pole MCB 6kA

### 2 Pole 6kA Curve - B

Item	Rated (A)	Packing Units	Trade Price
MCB GRB206	6	6	17.97
MCB GRB210	10	6	17.97
MCB GRB216	16	6	17.97
MCB GRB220	20	6	17.97
MCB GRB225	25	6	17.97
MCB GRB232	32	6	17.97
MCB GRB240	40	6	22.43
MCB GRB250	50	6	26.13
MCB GRB263	63	6	31.01



3-Pole MCB 6kA

### 3 Pole 6kA Curve - B

Item	Rated (A)	Packing Units	Trade Price
MCB GRB306	6	4	29.03
MCB GRB310	10	4	29.03
MCB GRB316	16	4	29.03
MCB GRB320	20	4	29.03
MCB GRB325	25	4	29.03
MCB GRB332	32	4	29.03
MCB GRB340	40	4	35.88
MCB GRB350	50	4	41.79
MCB GRB363	63	4	49.43

## MINIATURE CIRCUIT BREAKER 6kA CURVE C

### 1 Pole 6kA Curve - C

Item	Rated (A)	Packing Units	Trade Price
MCB GRC101	1	12	8.08
MCB GRC102	2	12	8.08
MCB GRC104	4	12	8.08
MCB GRC106	6	12	6.91
MCB GRC110	10	12	6.91
MCB GRC116	16	12	6.91
MCB GRC120	20	12	6.91
MCB GRC125	25	12	6.91
MCB GRC132	32	12	6.91
MCB GRC140	40	12	9.00
MCB GRC150	50	12	15.51
MCB GRC163	63	12	18.33



1-Pole MCB 6kA

### 2 Pole 6kA Curve - C

Item	Rated (A)	Packing Units	Trade Price
MCB GRC206	6	6	17.97
MCB GRC210	10	6	17.97
MCB GRC216	16	6	17.97
MCB GRC220	20	6	17.97
MCB GRC225	25	6	17.97
MCB GRC232	32	6	17.97
MCB GRC240	40	6	22.43
MCB GRC250	50	6	26.13
MCB GRC263	63	6	31.01



3-Pole MCB 6kA

### 3 Pole 6kA Curve - C

Item	Rated (A)	Packing Units	Trade Price
MCB GRC306	6	4	29.03
MCB GRC310	10	4	29.03
MCB GRC316	16	4	29.03
MCB GRC320	20	4	29.03
MCB GRC325	25	4	29.03
MCB GRC332	32	4	29.03
MCB GRC340	40	4	35.88
MCB GRC350	50	4	41.79
MCB GRC363	63	4	49.43

## MINIATURE CIRCUIT BREAKER 10kA CURVE B

### 1-Pole 10kA Curve - B

Item	Rated (A)	Packing Units	Trade Price
MCB GSB 106	6	12	8.23
MCB GSB 110	10	12	8.23
MCB GSB 116	16	12	8.23
MCB GSB 120	20	12	8.23
MCB GSB 125	25	12	8.23
MCB GSB 132	32	12	8.23
MCB GSB 140	40	12	10.20
MCB GSB 150	50	12	20.43
MCB GSB 163	63	12	24.42



1-Pole MCB 10kA

### 2-Pole 10kA Curve - B

Item	Rated (A)	Packing Units	Trade Price
MCB GSB 206	6	6	19.77
MCB GSB 210	10	6	19.77
MCB GSB 213	13	6	19.77
MCB GSB 216	16	6	19.77
MCB GSB 220	20	6	19.77
MCB GSB 225	25	6	19.77
MCB GSB 232	32	6	19.77
MCB GSB 240	40	6	30.19
MCB GSB 250	50	6	42.42
MCB GSB 263	63	6	52.56



2-Pole MCB 10kA

### 3-Pole 10kA Curve - B

Item	Rated (A)	Packing Units	Trade Price
MCB GSB 306	6	4	40.49
MCB GSB 310	10	4	40.49
MCB GSB 316	16	4	40.49
MCB GSB 320	20	4	40.49
MCB GSB 325	25	4	40.49
MCB GSB 332	32	4	40.49
MCB GSB 340	40	4	57.61
MCB GSB 350	50	4	71.46
MCB GSB 363	63	4	86.27



3-Pole MCB 10kA

## MINIATURE CIRCUIT BREAKER 10kA CURVE C

### 1-Pole 10kA Curve - C

Item	Rated (A)	Packing Units	Trade Price
MCB GSC 101	1	12	10.67
MCB GSC 102	2	12	10.67
MCB GSC 104	4	12	10.67
MCB GSC 106	6	12	8.23
MCB GSC 110	10	12	8.23
MCB GSC 116	16	12	8.23
MCB GSC 120	20	12	8.23
MCB GSC 125	25	12	8.23
MCB GSC 132	32	12	8.23
MCB GSC 140	40	12	10.20
MCB GSC 150	50	12	20.43
MCB GSC 163	63	12	24.42



1-Pole MCB 10kA

### 2-Pole 10kA Curve - C

Item	Rated (A)	Packing Units	Trade Price
MCB GSC 206	6	6	19.77
MCB GSC 210	10	6	19.77
MCB GSC 216	16	6	19.77
MCB GSC 220	20	6	19.77
MCB GSC 225	25	6	19.77
MCB GSC 232	32	6	19.77
MCB GSC 240	40	6	22.86
MCB GSC 250	50	6	42.42
MCB GSC 263	63	6	52.56



2-Pole MCB 10kA

### 3-Pole 10kA Curve - C

Item	Rated (A)	Packing Units	Trade Price
MCB GSC 301	1	4	50.67
MCB GSC 302	2	4	50.67
MCB GSC 304	4	4	50.67
MCB GSC 306	6	4	40.49
MCB GSC 310	10	4	40.49
MCB GSC 316	16	4	40.49
MCB GSC 320	20	4	40.49
MCB GSC 325	25	4	40.49
MCB GSC 332	32	4	40.49
MCB GSC 340	40	4	57.61
MCB GSC 350	50	4	71.46
MCB GSC 363	63	4	86.27



3-Pole MCB 10kA

## MINIATURE CIRCUIT BREAKER 10kA CURVE D

### 1-Pole 10kA Curve - D

Item	Rated (A)	Packing Units	Trade Price
MCB GSD 106	6	12	8.23
MCB GSD 110	10	12	8.23
MCB GSD 116	16	12	8.23
MCB GSD 120	20	12	8.23
MCB GSD 125	25	12	8.23
MCB GSD 132	32	12	8.23



1-Pole MCB 10kA

### 2-Pole 10kA Curve - D

Item	Rated (A)	Packing Units	Trade Price
MCB GSD 206	6	6	19.77
MCB GSD 210	10	6	19.77
MCB GSD 216	16	6	19.77
MCB GSD 220	20	6	19.77
MCB GSD 225	25	6	19.77
MCB GSD 232	32	6	19.77



2-Pole MCB 10kA

### 3-Pole 10kA Curve - D

Item	Rated (A)	Packing Units	Trade Price
MCB GSD 306	6	4	40.49
MCB GSD 310	10	4	40.49
MCB GSD 316	16	4	40.49
MCB GSD 320	20	4	40.49
MCB GSD 325	25	4	40.49
MCB GSD 332	32	4	40.49



3-Pole MCB 10kA

## LOCKING DEVICE

Locking device makes it possible to lock dolly in a specific position on the component.

Item	Description	Trade Price
MCB LOCK	Locking device suitable for Miniature Circuit Breakers in the 6kA & 10kA ranges.	11.53



MCB LOCK

## AUXILIARY CONTACTS

For remote indication of the status of Miniature Circuit Breakers.

Item	Description	Modules	AC12	DC12	Trade Price
MCB GR AUX	Auxiliary Contact for 6kA & 10KA breakers 1no + 1nc	0,5	230V-6A	110V-1A	8.99



MCB GR AUX

## MINIATURE CIRCUIT BREAKER 10kA 80 - 125A

### 1-Pole 10kA Curve C

Item	Rated (A)	Packaging Units	Modules	Trade Price
GCB C180	80	12	1.5	30.02
GCB C1100	100	12	1.5	34.01
GCB C1125	125	12	1.5	38.34

### 2 Pole 10kA Curve C

Item	Rated (A)	Packaging Units	Modules	Trade Price
GCB C280	80	6	3	111.01
GCB C2100	100	6	3	105.52
GCB C2125	125	6	3	188.04

### 3 Pole 10kA Curve C

Item	Rated (A)	Packaging Units	Modules	Trade Price
GCB C380	80	4	4.5	141.91
GCB C3100	100	4	4.5	159.13
GCB C3125	125	4	4.5	176.86



3-Pole 10kA  
HIGH CURRENT MCB

## RESIDUAL CURRENT CIRCUIT BREAKERS

GARO's range of RCCBs are **10kA, Type A or Type B** and are tested and certified to standard EN 61008. The range can be fed from the TOP or BOTTOM. On each 2-Pole 10kA device it is possible to connect the neutral conductor on the right or left side. Protection to IP20. Auxiliary Contact see previous page.

**GARO RCCB**    Type A & B    Rated Voltage 200-415V AC    Max Torque 3 Nm    Protection Class IP20

### 10kA TYPE A

Item	Rated (A)	Modules	Poles	mA	Max cable size mm <sup>2</sup>	Trade Price
<b>2 Pole</b>						
GCD 25-2-03	25	2	2	30	25	35.28
GCD 40-2-03	40	2	2	30	25	34.19
GCD 63-2-03	63	2	2	30	25	38.96
GCD 63-2-1	63	2	2	100	25	68.84
GCD 63-2-3	63	2	2	300	25	68.84
GCD 80-2-03	80	2	2	30	25	74.97
GCD 100-2-1	100	2	2	100	25	198.78
GCD 100-2-3	100	2	2	300	25	198.78



GCD 25-2-03

Item	Rated (A)	Modules	Poles	mA	Max cable size mm <sup>2</sup>	Trade Price
------	-----------	---------	-------	----	--------------------------------	-------------

### 4 Pole

GCD 25-4-03	25	4	4	30	25	61.10
GCD 40-4-03	40	4	4	30	25	61.10
GCD 63-4-03	63	4	4	30	25	78.73
GCD 80-4-03	80	4	4	30	25	103.35
GCD 100-4-03	100	4	4	30	25	244.30
GCD 40-4-3	40	4	4	300	25	62.13
GCD 63-4-3	63	4	4	300	25	84.56
GCD 63-4-5	63	4	4	500	25	84.56
GCD 80-4-3	80	4	4	300	25	112.02
GCD 100-4-1	100	4	4	100	25	212.57
GCD 100-4-3	100	4	4	300	25	212.57



GCD 63-4-5

### 10kA TYPE B

GCD63-4-03B	63A	4	4	30	25	378.49
-------------	-----	---	---	----	----	--------

### RCCB TYPE S

Selective - minimum time delay 40ms.

Item	Rated (A)	Modules	Poles	mA	Max cable size mm <sup>2</sup>	Trade Price
<b>2 Pole</b>						
GCD 63-2-1S	63	2	2	100	25	108.50
GCD 63-2-3S	63	2	2	300	25	108.50
<b>4 Pole</b>						
GCD 63-4-1S	63	4	4	100	25	142.45
GCD 63-4-3S	63	4	4	300	25	142.45

### AUXILIARY CONTACTS

Item	Description	Trade Price
HLPKD	Aux for RCCB 2 Pole + 4 Pole	11.89

## RESIDUAL CURRENT BREAKER with Overcurrent Protection (RCBO) 6kA **\*\*TYPE A\*\***

An RCBO is a combination of an RCCB and MCB. The 6kA range is **Type A** and can be supplied from the top or bottom. The products are approved and certified according to EN 61009.

**GARO RCBO 6kA Type A**

Rated Voltage 200-415V AC

Max Torque 3 Nm

Protection Class IP20

### 6kA TYPE A

Item	Rated (A)	Modules	Poles	mA	For cable size mm <sup>2</sup>	Trade Price
<b>2 Pole 6kA Curve B - TYPE A</b>						
RCBO GRB06	6	2	2	30	1-25	29.79
RCBO GRB10	10	2	2	30	1-25	29.79
RCBO GRB16	16	2	2	30	1-25	29.79
RCBO GRB20	20	2	2	30	1-25	29.79
RCBO GRB25	25	2	2	30	1-25	29.79
RCBO GRB32	32	2	2	30	1-25	29.79
RCBO GRB40S	40	2	2	30	1-25	29.79



2 Pole RCBO 6kA

Item	Rated (A)	Modules	Poles	mA	For cable size mm <sup>2</sup>	Trade Price
<b>4 Pole 6kA Curve B - TYPE A</b>						
RCBO GSB06	6	4	3P+N	30	1-25	127.83
RCBO GSB10	10	4	3P+N	30	1-25	127.83
RCBO GSB16	16	4	3P+N	30	1-25	127.83
RCBO GSB20	20	4	3P+N	30	1-25	127.83
RCBO GSB25	25	4	3P+N	30	1-25	127.83
RCBO GSB32	32	4	3P+N	30	1-25	127.83

Item	Rated (A)	Modules	Poles	mA	For cable size mm <sup>2</sup>	Trade Price
<b>2 Pole 6kA Curve C - TYPE A</b>						
RCBO GRC06	6	2	2	30	1-25	29.79
RCBO GRC10	10	2	2	30	1-25	29.79
RCBO GRC16	16	2	2	30	1-25	29.79
RCBO GRC20	20	2	2	30	1-25	29.79
RCBO GRC25	25	2	2	30	1-25	29.79
RCBO GRC32	32	2	2	30	1-25	29.79
RCBO GRC40	40	2	2	30	1-25	29.79



4 Pole RCBO 6kA

Item	Rated (A)	Modules	Poles	mA	For cable size mm <sup>2</sup>	Trade Price
<b>4 Pole 6kA Curve C - TYPE A</b>						
RCBO GSC06	6	4	3P+N	30	1-25	127.83
RCBO GSC10	10	4	3P+N	30	1-25	127.83
RCBO GSC16	16	4	3P+N	30	1-25	127.83
RCBO GSC20	20	4	3P+N	30	1-25	127.83
RCBO GSC25	25	4	3P+N	30	1-25	127.83
RCBO GSC32	32	4	3P+N	30	1-25	127.83

## RCBO ACCESSORIES

Item	Description	Trade Price
LB2	Locking mechanism for RCBO & RCCB	6.72
HLPKO	Aux for RCBO 2 Pole + 4 Pole	14.57





## RESIDUAL CURRENT BREAKER with Overcurrent Protection (RCBO) 10kA

An RCBO is a combination of an RCCB and MCB. The 10kA range is **Type A** and can be supplied from the top or bottom. The products are approved and certified according to EN 61009.

**GARO RCBO 10kA** Type A Rated Voltage 200-415V AC Max Torque 3 Nm Protection Class IP20

Item	Rated (A)	Modules	Poles	mA	For cable size mm <sup>2</sup>	Trade Price
<b>2 Pole 10kA Curve B</b>						
RCBO GS B06A2P	6	2	2	30	1-25	44.34
RCBO GS B10A2P	10	2	2	30	1-25	44.34
RCBO GS B16A2P	16	2	2	30	1-25	44.34
RCBO GS B20A2P	20	2	2	30	1-25	44.34
RCBO GS B25A2P	25	2	2	30	1-25	44.34
RCBO GS B32A2P	32	2	2	30	1-25	44.34
RCBO GS B40A2P	40	2	2	30	1-25	44.34

Item	Rated (A)	Modules	Poles	mA	For cable size mm <sup>2</sup>	Trade Price
<b>2 Pole 10kA Curve - C</b>						
RCBO GS C06A2P	6	2	2	30	1-25	44.34
RCBO GS C10A2P	10	2	2	30	1-25	44.34
RCBO GS C16A2P	16	2	2	30	1-25	44.34
RCBO GS C20A2P	20	2	2	30	1-25	44.34
RCBO GS C25A2P	25	2	2	30	1-25	44.34
RCBO GS C32A2P	32	2	2	30	1-25	44.34
RCBO GS C40A2P	40	2	2	30	1-25	44.34



2 Pole RCBO 10kA

## 1 MOD RESIDUAL CURRENT BREAKER with Overcurrent Protection (RCBO) 6kA

The 1 Mod 6kA range is **Type A** 1P + N RCBO and **MUST ONLY** be supplied from the **bottom**. The products are approved and certified according to EN 61009.

**GARO RCBO 6kA** Type A Rated Voltage 200-415V AC Max Torque 3 Nm Protection Class IP20

Item	Rated (A)	Modules	Poles	mA	For cable size mm <sup>2</sup>	Trade Price
<b>2 Pole 6kA Curve B</b>						
RCBO GI B06	6	1	1 + N	30	1-6	34.98
RCBO GI B10	10	1	1 + N	30	1-6	34.98
RCBO GI B16	16	1	1 + N	30	1-6	34.98
RCBO GI B20	20	1	1 + N	30	1-6	34.98
RCBO GI B25	25	1	1 + N	30	1-6	34.98

Item	Rated (A)	Modules	Poles	mA	For cable size mm <sup>2</sup>	Trade Price
<b>2 Pole 6kA Curve C</b>						
RCBO GI C06	6	1	1 + N	30	1-6	34.98
RCBO GI C10	10	1	1 + N	30	1-6	34.98
RCBO GI C16	16	1	1 + N	30	1-6	34.98
RCBO GI C20	20	1	1 + N	30	1-6	34.98
RCBO GI C25	25	1	1 + N	30	1-6	34.98



1 Mod 2 Pole RCBO

Item	Description	Modular Length	For cable size mm <sup>2</sup>	Trade Price
<b>ACCESSORIES</b>				
AS-35-SLISOSO	Terminal Connector		25	2.01
SKN0021-10	SP Busbar 10 mm <sup>2</sup> to suit 1mod RCBO	12		14.84
SKN0029-10	TP Busbar 10 mm <sup>2</sup> to suit 1mod RCBO	12		24.57

## RESIDUAL CURRENT BREAKER with Overcurrent Protection (RCBO) 6kA **\*\*TYPE B\*\***

An RCBO is a combination of an RCCB and MCB. This 6kA range is **Type B** and can be supplied from the top or bottom. The products are approved and certified according to EN 61009.

**GARO RCBO 6kA Type B**      Rated Voltage 200-415V AC      Max Torque 3 Nm      Protection Class IP20

Item	Rated (A)	Modules	Poles	mA	For cable size mm <sup>2</sup>	Trade Price
<b>2 Pole 6kA Curve B - TYPE B</b>						
RCBOGRB06M4B	6	4	2	30	1-25	382.03
RCBOGRB10M4B	10	4	2	30	1-25	382.03
RCBOGRB13M4B	13	4	2	30	1-25	382.03
RCBOGRB16M4B	16	4	2	30	1-25	382.03
RCBOGRB20M4B	20	4	2	30	1-25	382.03
RCBOGRB26M4B	25	4	2	30	1-25	382.03
RCBOGRB32M4B	32	4	2	30	1-25	382.03
RCBOGRB40M4B	40	4	2	30	1-25	382.03

Item	Rated (A)	Modules	Poles	mA	For cable size mm <sup>2</sup>	Trade Price
<b>2 Pole 6kA Curve C - TYPE B</b>						
RCBOGRC06M4B	6	4	2	30	1-25	382.03
RCBOGRC10M4B	10	4	2	30	1-25	382.03
RCBOGRC16M4B	16	4	2	30	1-25	382.03
RCBOGRC20M4B	20	4	2	30	1-25	382.03
RCBOGRC25M4B	25	4	2	30	1-25	382.03
RCBOGRC32M4B	32	4	2	30	1-25	382.03
RCBOGRC40M4B	40	4	2	30	1-25	382.03



## MODULAR ISOLATOR & CHANGEOVER SWITCHES

Rated 10A - 100A, AC22 and certified to EN60947-3.

Item	Type	AC21-AC22 (A)	Modules	Poles	Operating Voltage V	For cable size mm <sup>2</sup>	Trade Price
<b>With dolly</b>							
GSV 1100	Isolator	100	1	1	230	35	9.28
GSV 2100	Isolator	100	2	2	400	35	19.43
GSV 3100	Isolator	100	3	3	400	35	30.36
GSV 4125	Isolator	125	4	4	400	35	43.36



GSV 2100

Item	Type	AC21-AC22 (A)	Modules	Poles	Operating Voltage V	Trade Price
<b>With toggle</b>						
Enclosure class IP20						
HOA 1	H-O-A	10	2	1	440	28.54
HOA 2	H-O-A	10	2	2	440	34.10



HOA 1

## ELECTRONIC TIMERS

Digital and Astronomical (SOLAR) time switches with daily and weekly adjustable programs.  
 Battery reserve of 3 years (Li-ion type CR-2032). Charge reserve of 1 minute (for battery replacement).  
 Halogen and incandescent = 1500W (@ 240V). Fluorescent = 600W (@ 240V)

Item	Modules	Channels	Relay Capacity	Trade Price
DV1KT3	2	1	250V AC - 16(10)A	74.95
DV2KT3	2	2	250V AC - 16(10)A	97.50
DV1K1M	1	1	250V AC - 16(10)A	109.40



DV1KT3



DV1K 1M

Item	Modules	Channels	Relay Capacity	Programmable	Trade Price
ASTRO1KT3	2	1	250V AC - 16(10)A	Dusk to dawn	94.72
ASTRO2KT3	2	2	250V AC - 16(10)A	Dusk to dawn	155.67



ASTRO2KT3

## MECHANICAL & ELECTROMECHANICAL TIMERS

Item	Modules	Relay Capacity	Quadrant Type	Intervention Time (min)	Intervention Precision	Trade Price
D1M MEK	1	250V AC - 16(4)A	24 hours - 96 trips x 15 mins	15 mins	+/- 5 mins	36.81
D3M MEK	3	250V AC - 16(4)A	24 hours - 48 trips x 30 mins	30 mins	+/- 7.5 mins	43.62
V3M MEK	3	250V AC - 16(4)A	168 hours - 48 trips x 3.5 hrs	3.5 hours	+/- 52.5 mins	84.29
GTA8	1	Staircase Timer	1-7 minutes	-	-	33.94



D3M MEK

Time switches with daily and weekly adjustable programs.  
 Charge reserve of 150 hours. Din rail mounting

## MULTIFUNCTION TIMER

Item	Description	Modules	Capacity	Functions	Trade Price
GCRM - 91H	Multifunction Time Relay	1	16A AC-DC 12-240V	10 x 0.15 - 10 days	46.46



## TEST RELAYS & TIME LAG SWITCHES

Item	Description	Contact	Trade Price
DCTU	Emergency Light Test Relay - Din Rail mounting	1 x c-o	54.40
COLUMBUS	Pneumatic Time Delay Switch - 6A, 5 secs - 20 mins	1 x c-o	47.44
GTA8	Staircase Timer 1 mod, 1 - 7 minutes		33.94



## SHOWER RELAY + TIMER

Item	Description	Rated(A)	Voltage	Trade Price
LSR11	Load drop relay 6,7	39A	230 Volt	48.54
SR 1000	Shower Timer 6 - 10		Set for 6 or 10 minute shower	75.32



## KILOWATT HOUR METERS

### Din rail mounted energy meters MID certified.

Item	Description	Measures	Mod- ules	Rated Current (A)	Trade Price
GNM1D	Garó SP Meter 45A Pulse MID	KWH, KW, V & A	1	45	63.36
GNM1D-RS485	Garó SP Meter 45A Modbus MID	KWH, KW, V & A	1	45	74.65
GNM1D-100-RS485	Garó SP Meter 100A Bi-directional Modbus	KWH, KW, V & A	2	100	140.77
GNM3D	Garó TP 65A Meter Pulse MID	KWH, KW, V & A	4	63	145.66
GNM3D-RS485	Garó TP 65A Meter Modbus MID	KWH, KW, V & A	4	63	158.41
GNM3TD	Garó MFM Dual RJ11 Input Pulse + Modbus	KWH, KW, V & A	4	160-630	209.87
GNT160	160A TP CT RJ11 150 cm Lead		CT	160	60.29
GNT250	250A TP CT RJ11 150 cm Lead		CT	250	67.68
GNT630	630A TP CT RJ11 150 cm Lead		CT	630	74.80
GM3T-RS485	Garó MFM 5A CT Input Pulse + Modbus	KWH, KW, V & A	4	6000	241.74



GNM1D



GNM3TD & GNT630

## CONTACTORS

Item	Contacts	Poles	Mod- ules	Rated		Coil		Trade Price
				AC-1[A]	Voltage (V)	Type		
<b>Modular contactors for din rail mounting</b>								
GK20-1NO1NC	1 NO + 1 NC	2	1	20	230	AC	20.00	
GK20-2NO	2 NO	2	1	20	230	AC	28.08	
GK20-2NC	2 NC	2	1	20	230	AC	32.71	
GK24-4NO	4 NO	4	2	25	230	AC-DC	33.70	
GK24-4NC	4 NC	4	2	25	230	AC-DC	38.42	
GK32-2NO	2 NO	2	1	32	230	AC-DC	34.39	
GK32-4NO	4 NO	4	2	32	230	AC-DC	36.89	
GK40-1NO	1 NO	1	1	40	230	AC-DC	50.62	
GK40-4NO	4 NO	4	3	40	230	AC-DC	80.48	
GK40-2NO2NC	2 NO + 2 NC	4	3	40	230	AC-DC	106.07	
GK63-4NO	4 NO	4	3	63	230	AC-DC	105.89	



GK40 - 2NO 2NC



GKD

Item	Description	Modules	Trade Price
------	-------------	---------	----------------

### ACCESSORIES FOR CONTACTORS

GKD	Distance Piece, 12gm, temperatures < 40 ° C	0,5	3.77
GKN 11	Auxiliary Contacts		18.72

## SWITCHFUSE TYPE DO

Item	Poles	Max Rated Current A	Modules	Trade Price
For fuses see page 39 & page 19 for busbar to suit				
STVDO 21P	1	63	1.5	12.75
STVDO 22P	2	63	3	35.28
STVDO 23P	3	63	4.5	49.42



NOTE: GARO's DO switchfuses STV can only be switched on when the fuse has been fully inserted.

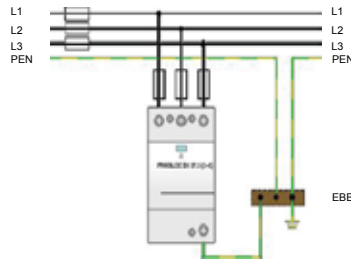
## SURGE PROTECTION DEVICES

Item	Poles	Class	Signal Relay	Impulse Current (10-350)uS	Max Current (8-20)uS	Back up Fuse Maximum	Trade Price
------	-------	-------	--------------	----------------------------	----------------------	----------------------	-------------

### CLASS 1 SURGE PROTECTION DEVICES

BSR 275 3pol	3	1, 11, 111	yes	25KA per pole	100KA per pole	250A gl	521.64
BSR 275 4pol	4	1, 11, 111	yes	25KA per pole	100KA per pole	250A gl	691.02
GBR 275 3pol	3	1, 11	yes	25KA per pole	100KA per pole	160A gl	326.28
GBR 275 4pol	4	1, 11	yes	25KA per pole	100KA per pole	160A gl	424.17

Category IEC-EN : Class 1 - Type 1  
 Location of use : Main distribution board  
 Network: TNC-S  
 In (8-20) : 25kA per pole  
 I<sub>max</sub> (8-20) : 25kA per pole  
 Standard : IEC61643-1



BSR 275 3pol



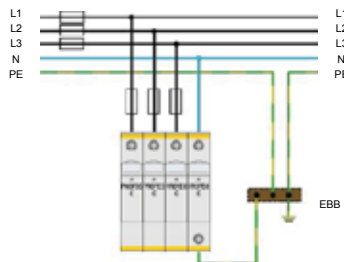
GBR 275 4pol

Item	Poles	Class	Signal Relay	Impulse Current (10-350)uS	Back up Fuse Maximum	Trade Price
------	-------	-------	--------------	----------------------------	----------------------	-------------

### CLASS 11 SURGE PROTECTION DEVICES

GPTT2-300-1-0	1	11	no	5KA per pole	125A	28.58
GPTT2-300-1-0-R	1	11	yes	5KA per pole	125A	39.91
GPTT2-300-2-0	2	11	no	5KA per pole	125A	54.87
GPTT2-300-2-0-R	2	11	yes	5KA per pole	125A	70.26
GPTT2-300-3-0	3	11	no	5KA per pole	125A	82.26
GPTT2-300-3-0-R	3	11	yes	5KA per pole	125A	104.14
GPTT2-300-4-0	4	11	no	5KA per pole	125A	109.66
GPTT2-300-4-0-R	4	11	yes	5KA per pole	125A	135.11
GPT275plug	1	11	yes	5KA per pole	125A	37.81

Category IEC-EN : Class 11 - Type 11  
 Location of use : Main - Sub distribution board  
 Network: TNC-S  
 In (8-20) : 5kA per pole  
 I<sub>max</sub> (8-20) : 20kA per pole  
 Standard : IEC61643-1



GPT 275 4pol

## SURGE PROTECTION DEVICES

Item	Poles	Class	Signal Relay	Impulse Current (10-350)uS	Max Current (8-20)uS	Backup Fuse Maximum	Trade Price
------	-------	-------	--------------	----------------------------	----------------------	---------------------	-------------

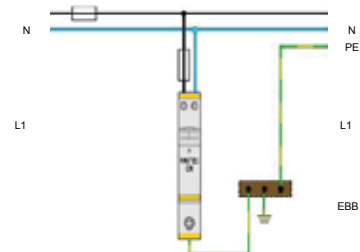
### CLASS 111 SURGE PROTECTION DEVICES

PDM 320	1	111	no	n-a	10KA per pole	63A	87.01
PDMR 320	1	111	yes	n-a	10KA per pole	63A	102.06
PDM 320plug	1	111	yes	n-a	10KA per pole	63A	78.51
GTS 170	1	111	yes	n-a	20KA per pole	63A	111.46
GTS 170plug	1	111	yes	n-a	20KA per pole	63A	92.42



PDM 320

Category IEC-EN : Class 111 - Type 111  
 Location of use : Sub - Local distribution board  
 Network : TNC-S  
 In (8-20) : 5kA per pole  
 I<sub>max</sub> (8-20) : 10kA per pole  
 Standard : IEC61643-1



## BUSBAR

Item	Description	Current capacity with end input (A)	Current capacity with central input (A)	Trade Price
------	-------------	-------------------------------------	---	-------------

### Pin type busbar with insulation

S-1L-1000-10I	10 mm <sup>2</sup> 1-phase, 57 mod	63	100	13.80
S-2L-1000-10	10 mm <sup>2</sup> 2-phase, 57 mod	63	100	24.61
S-3L-1000-10	10 mm <sup>2</sup> 3-phase, 57 mod	63	100	27.77
S-3L-1000-16	16 mm <sup>2</sup> 3-phase, 57 mod	80	130	42.29
S-4L-1000-16	16 mm <sup>2</sup> for 4 Pole RCCB	80	130	60.34
S-1L-2MOD-10ISO	10mm <sup>2</sup> 1-phase 2mod insulated busbar			0.58
S-1L-27-1000	16 mm <sup>2</sup> 1-phase	80	130	41.22
S-3L-27-1000	16 mm <sup>2</sup> 3-phase, for do - neoz fuse holders	80	130	52.12
S-1L-145-10-ISO	10 mm <sup>2</sup> 1-phase, 8 mod	63	100	1.71
S-1L-210-10-ISO	10 mm <sup>2</sup> 1-phase, 12 mod	63	100	3.40



### Fork type busbar with insulation

G-1L-1000-10ISO	10 mm <sup>2</sup> 1-phase, 57 mod	63	100	12.92
G-2L-1000-10M5	10 mm <sup>2</sup> 2-phase, 57 mod	63	100	24.49
G-3L-1000-10CM5	10 mm <sup>2</sup> 3-phase, 57 mod	63	100	26.59
G-L1-N-L2-N-L	16 mm <sup>2</sup> 3-phase+N, 57 mod	80	130	66.69
G-4L-1000-16	16 mm <sup>2</sup> 3-phase+N	80	130	58.59



## BELL TRANSFORMER - BELL - CHIME

Item	Description	Modules	Rated Current	Trade Price
TRAN 8-12-24	Bell transformer	2	230-8V,12V,24V 1A	16.20
BIM85	Door Chime (Double Sound)			13.87



TRAN8-12-24

## ACCESSORIES

Item	Description	Trade Price
<b>Terminals and Connectors</b>		
AS25-SN	Cable Connector Pin to suit 25 mm <sup>2</sup> cable	1.92
AS25-GN	Cable Connector Fork to suit 25 mm <sup>2</sup> cable	1.92
AS35-S	Cable Connector Pin to suit 35 mm <sup>2</sup> cable	2.16
AS-35-SLISOSO	Cable Connector Pin to suit 35 mm <sup>2</sup> cable. 27mm PITCH	2.01
AS50-SN	Cable Connector Pin to suit 50 mm <sup>2</sup> cable. 15mm PITCH	3.41
E7	Earth Terminal Block 7 Way 16 mm <sup>2</sup> clips on to DIN rail	2.19
N7	Neutral Terminal Block 7 Way 16 mm <sup>2</sup> clips on to DIN rail	2.24
BRASS 9	9 Way Brass Terminal for Garo Consumer Units	2.14
BRASS 18	18 Way Brass Terminal for Garo Consumer Units	5.63
BRASS 3LA	18 Way Brass Terminal for LA Consumer Units	5.63
BRASSBAR	Brass Terminal 6.5 x 9 x 288mm	7.80
BRASSBAR1M	Neutral or Earth Bar 6.5 x 9 x 1000mm 153 way	20.74
KKS1-2	Supports for N-E Terminal Bar (1 metre)	1.13
E15	Earth Terminal 15Way Clip-On	12.25
N15	Neutral Terminal 15Way Clip-On	12.25
NPE35	Earth - Neutral Terminal 160A to suit 35 mm <sup>2</sup> cable	12.69
NPE120	Earth - Neutral Terminal 250A to suit 120 mm <sup>2</sup> cable	40.72
TBN185	Earth - Neutral Terminal 400A to suit 185 mm <sup>2</sup> cable	57.62
DISCT6US	Disconnect Test Terminal	5.16
EPDISCT6U	End Plate for Disconnect Terminal	0.45
RPQ 1000	125A 4 Pole short busbar block	13.40
RPQ 1005	125A 4 Pole long busbar Block	18.25
RPQ 1010	100A 4 Pole longest Busbar Block	23.89
RPQ 1016	160A 4 Pole modular Busbar Block with Top & Bottom entry	55.63
RPQ 1017	160A 4 Pole modular Busbar Block	55.63
RPQ 1020	100A 4 Pole shallow Busbar Block	75.07
RPQ 1025	100A 4 Pole Busbar Block	29.79

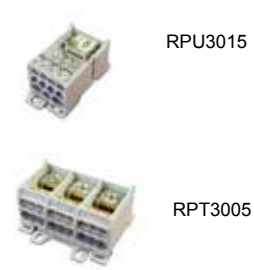


Item	Description	Trade Price
<b>Blanking Strip Plastic</b>		
<b>Covers the empty spaces in the front cover of distribution enclosures</b>		
TC-1A	4.5 modules - easily cut into desired size	1.02
ZA2W	57 modules (1 metre)	6.10



## DISTRIBUTION BLOCKS

Item	Pole	Rating (A)	Incoming Terminals Qty x mm	Outgoing Terminals Qty x mm	kA	Trade Price
RPU 2995	SP	80	1 x 16	2x16,4x6	22	9.96
RPU 3000	SP	125	1 x 35	10x16	25	29.00
RPU 3005	SP	160	1 x 70	10x16	35	29.55
RPU 3010	SP	250	1 x 120	4x10,5x16,2x25	50	45.75
RPU 3015	SP	400	1 x 185	4x10,5x16,2x25	50	46.27
RPU 3020	SP	500	1 x 185	4x10,5x16,2x25	50	50.86
RPT 3000	TP	125	1 x 35	6 x 16	25	56.83
RPT 3005	TP	160	1 x 70	6 x 16	35	59.16



## TERMINAL BLOCKS

Item		Size	Colour	Trade Price
GKL 1x50 GRE	Terminal Block A Class	1 x 50	Grey	3.64
GKL 2x50 GRE	Terminal Block A Class	2 x 50	Grey	6.63
GKL 1x50 BLE	Terminal Block A Class	1 x 50	Blue	3.64
GKL 2x50 BLE	Terminal Block A Class	2 x 50	Blue	6.63
GKL 1x50 G-G	Terminal Block A Class	1 x 50	Green/Ylw	3.64
GKL 2x50 G-G	Terminal Block A Class	2 x 50	Green/Ylw	6.63
GKL 1x95 GRE	Terminal Block A Class	1 x 95	Grey	9.20
GKL 2x95 GRE	Terminal Block A Class	2 x 95	Grey	17.80
GKL 1x95 BLE	Terminal Block A Class	1 x 95	Blue	9.20
GKL 2x95 BLE	Terminal Block A Class	2 x 95	Blue	17.80
GKL 1x95 G-G	Terminal Block A Class	1 x 95	Green/Ylw	9.20
GKL 2x95 G-G	Terminal Block A Class	2 x 95	Green/Ylw	17.80
GKL 1x150 GRE	Terminal Block A Class	1 x 150	Grey	15.44
GKL 2x150 GRE	Terminal Block A Class	2 x 150	Grey	31.24
GKL 1x150 BLE	Terminal Block A Class	1 x 150	Blue	15.44
GKL 2x150 BLE	Terminal Block A Class	2 x 150	Blue	31.24
GKL 1x150 G-G	Terminal Block A Class	1 x 150	Green/Ylw	15.44
GKL 2x150 G-G	Terminal Block A Class	2 x 150	Green/Ylw	31.24
GKL 1x240 GRE	Terminal Block A Class	1 x 240	Grey	24.25
GKL 2x240 GRE	Terminal Block A Class	2 x 240	Grey	41.17
GKL 1x240 BLE	Terminal Block A Class	1 x 240	Blue	24.25
GKL 2x240 BLE	Terminal Block A Class	2 x 240	Blue	41.17
GKL 1x240 G-G	Terminal Block A Class	1 x 240	Green/Ylw	24.25



## GROUP LINK BOX

Item	Description	Height mm	Width mm	Depth mm	Trade Price
GKLM 2x16 NCG	16sq GRP link box	190	144	131	101.12
GKLM 2x50 NCG	50sq GRP link box	255	180	139	168.02
GKLM 2x95 NCG	95sq GRP link box	380	280	171	314.62



GKLM 2x16 NCG





# METAL CONSUMER UNITS



18TH EDITION  
COMPLIANT



CE CERTIFIED



ENHANCED  
PROTECTION



COMPREHENSIVE  
WARRANTIES

## CONSUMER UNITS - Surface Metal IP41 BS EN60439-3

Exclusive design for surface mounting. The housing is manufactured in metal and is also fitted with a door. Each unit is supplied with earth and neutral blocks, additional blocks can be fitted on request.

The enclosures are manufactured from steel. Applicable standard is EN60439-3 for a rated current of 80A at 400Volts. All GARO consumer units are assembled in our manufacturing facility specialising in quick turnaround on bespoke orders. Amendment 3 compliant

Full CAD design service available.

For MCB's see pages 6 - 10, RCBO's pages 13 - 15

## METAL CONSUMER UNITS IP41 WITH ISOLATOR

### Incomer 100A DP Switch Incomer

Item	Incoming		Ways Free	Trade Price
G4S2C	100A	DP Switch	2	42.17
G6S4C	100A	DP Switch	4	47.06
G8S6C	100A	DP Switch	6	50.66
G10S8C	100A	DP Switch	8	54.16
G12S10C	100A	DP Switch	10	57.26
G14S12C	100A	DP Switch	12	59.74
G16S14C	100A	DP Switch	14	63.45
G18S16C	100A	DP Switch	16	66.14
G21S19C	100A	DP Switch	19	78.28



G12S10C

## METAL CONSUMER UNITS IP41 WITH RCCB

### Incomer 63A DP RCCB

Item	Incoming		Ways Free	Trade Price
G4R2C	63A	DP RCCB	2	58.73
G6R4C	63A	DP RCCB	4	63.49
G8R6C	63A	DP RCCB	6	66.99
G10R8C	63A	DP RCCB	8	69.22
G12R10C	63A	DP RCCB	10	73.77
G14R12C	63A	DP RCCB	12	76.21
G16R14C	63A	DP RCCB	14	79.97
G18R16C	63A	DP RCCB	16	81.58
G21R19C	63A	DP RCCB	19	94.80



G4R2C

### Incomer 80A DP RCCB

Item	Incoming		Ways Free	Trade Price
G4R2-80C	80A	DP RCCB	2	77.26
G6R4-80C	80A	DP RCCB	4	83.44
G8R6-80C	80A	DP RCCB	6	86.51
G10R8-80C	80A	DP RCCB	8	89.62
G12R10-80C	80A	DP RCCB	10	92.70
G14R12-80C	80A	DP RCCB	12	94.78
G16R14-80C	80A	DP RCCB	14	101.88
G18R16-80C	80A	DP RCCB	16	105.06
G21R19-80C	80A	DP RCCB	19	117.41



G18R16-80C

For MCB's see pages 6 - 10, RCBO's pages 13 - 15

**Warranty** \* Mechanical Components MCB, RCD, RCBO 5 Years \*EV Chargers 3 Years \*All Other 2 Years

**METAL CONSUMER UNITS IP41 WITH ISOLATOR & RCCB'S**

**100A DP Switch Incomer & 63A RCCB'S**

Item	Incoming		Ways Free	RCCB	Trade Price
G14SRR4-4C	100A	DP Switch	4-4	2 x 63A	133.07
G16SRR5-5C	100A	DP Switch	5-5	2 x 63A	137.66
G18SRR6-6C	100A	DP Switch	6-6	2 x 63A	139.05
G21SRR7-8C	100A	DP Switch	7-8	2 x 63A	148.49



G16SRR5-5C

**100A DP Switch Incomer & 80A RCCB'S**

Item	Incoming		Ways Free	RCCB	Trade Price
G14SRR4-4-80C	100A	DP Switch	4-4	2 x 80A	169.95
G16SRR5-5-80C	100A	DP Switch	5-5	2 x 80A	179.21
G18SRR6-6-80C	100A	DP Switch	6-6	2 x 80A	185.40
G21SRR7-8-80C	100A	DP Switch	7-8	2 x 80A	194.68



G16SRR5-5-80C

For MCB's see pages 6 - 10, RCBO's pages 13 - 15

**GARAGE BOARDS**

Item	RCCB	MCB's	Trade Price
G3R1C	40	40	58.82
G4R2CG	40	6, 16	60.69



G4R2CG

**Distribution Boards with Surge Protection c/w 100A DP Switch Incomer**

**100A Isolator**

Item	Incoming		Ways Free	Surge	Trade Price
GS4S	100A	DP Switch	0	Y	98.44
GS6S2C	100A	DP Switch	2	Y	103.48
GS8S4C	100A	DP Switch	4	Y	106.86
GS10S6C	100A	DP Switch	6	Y	109.15
GS12S8C	100A	DP Switch	8	Y	112.24
GS14S10C	100A	DP Switch	10	Y	114.69
GS16S12C	100A	DP Switch	12	Y	118.44
GS18S164	100A	DP Switch	14	Y	121.14
GS21S17C	100A	DP Switch	17	Y	133.27
GS28S24C	100A	DP Switch	24	Y	151.57
GS32S28C	100A	DP Switch	28	Y	170.24



GS21S17C

**100A Isolator & 2 x 80A RCCB'S**

Item	Incoming		Ways Free	Surge	RCCB	Trade Price
GS14SRR3-3-80C	100A	DP Switch	6	Y	2 X 80A	204.98
GS16SRR4-4-80C	100A	DP Switch	8	Y	2 X 80A	208.73
GS18SRR5-5-80C	100A	DP Switch	10	Y	2 X 80A	211.42
GS21SRR6-7-80C	100A	DP Switch	13	Y	2 X 80A	222.54
GS28SRR8-12-80C	100A	DP Switch	20	Y	2 X 80A	253.69
GS32SRR10-14-80C	100A	DP Switch	24	Y	2 X 80A	243.07



GS21SRR6-7-80C

Item	Incoming		Ways Free	Surge	Trade Price
G4SF80	100A	DP SwitchFuse	0	N	55.58
GS6SF80	100A	DP SwitchFuse	0	Y	109.77



G4SF80

## PRIORITY AND NON PRIORITY SHOWER BOARDS

Item	Enclosure	Incoming	Description	No. of Showers	Relays	Trade Price
GM6-PS	G6S4	40A RCBO	PRIORITY / EV	2	1	168.16
GM10-PS63	G10S8	63A RCD	PRIORITY	2	1	208.03
GM8-NPS	G8S6	40A RCBO	NON PRIORITY	2	2	203.26
GM14-3NPS	G12S10	40A RCBO	NON PRIORITY	3	3	450.02



## ELECTRICAL VEHICLE DISTRIBUTION BOARDS

Item	Enclosure	Total Modules	Free Modules	Incoming	PEN Fault Detection	DLM	Trade Price
G2EV40	G2-2	2	0	RCBO A	-	-	53.75
G4EV40	G4-4	4	2	RCBO A	-	-	56.50
G6EV40PME	G6-6	6	0	RCBO A	Yes	-	216.00
G6EVPME	G6-6	6	0	Terminals	Yes	-	200.00
G6EVPME132	G6-6	6	0	MCB	Yes	-	202.00
G8EV40PMEB	G8S6	8	0	RCBO B	Yes	-	508.00
GC6EV40PME	GCUT6	6	0	RCBO A	Yes	-	235.80
G10EV40PMEDLMA	G10S8	10	1	RCBO A	Yes	Yes	458.95
G12EV40PMEDLMB	G12S10	12	1	RCBO B	Yes	Yes	800.00



G8EV40PMEB

## Consumer Unit Accessories

### Minature Circuit Breakers Pole 6kA Curve - B

Item	Rated (A)	Packing Units	Trade Price
MCB GRB106	6	12	6.64
MCB GRB110	10	12	6.64
MCB GRB116	16	12	6.64
MCB GRB120	20	12	6.64
MCB GRB125	25	12	6.64
MCB GRB132	32	12	6.64
MCB GRB140	40	12	8.82
MCB GRB150	50	12	15.21
MCB GRB163	63	12	17.97



### Residual Current Breaker with Overcurrent (RCBO) 2 Pole 6kA Curve - B

Item	Rated (A)	Modules	Poles	mA	For cable size mm <sup>2</sup>	Trade Price
RCBO LIB06R	6	1		30	1-6	33.75
RCBO LIB10R	10	1		30	1-6	33.75
RCBO LIB16R	16	1		30	1-6	33.75
RCBO LIB20R	20	1		30	1-6	33.75
RCBO LIB25R	25	1		30	1-6	33.75
RCBO LIB32R	32	1		30	1-6	33.75
RCBO LIB40R	40	1		30	1-6	33.75
RCBO LIB45R	45	1		30	1-6	33.75



### 2 Pole 6kA Curve - C

Item	Rated (A)	Modules	Poles	mA	For cable size mm <sup>2</sup>	Trade Price
RCBOLIC06R	6	1		30	1-6	33.75
RCBOLIC10R	10	1		30	1-6	33.75
RCBOLIC16R	16	1		30	1-6	33.75
RCBOLIC20R	20	1		30	1-6	33.75
RCBOLIC25R	25	1		30	1-6	33.75
RCBOLIC32R	32	1		30	1-6	33.75
RCBOLIC40R	40	1		30	1-6	33.75
RCBOLIC45R	45	1		30	1-6	33.75

## TPN - Surface Metal IP41

Exclusive design for surface mounting. The housing is manufactured in metal and is also fitted with a door. Each unit is supplied with earth and neutral blocks.

### Metal TPN Boards 125A

Item	Ways	Rating (A)	Width mm	Height mm	Depth mm	Trade Price
GTPN12	12	125	465	506	105	121.10
GTPN18	18	125	465	560	105	133.62
GTPN24	24	125	465	614	105	146.14
GTPN30	30	125	465	668	105	170.63
GTPN36	36	125	465	722	105	196.24
GTPN42	42	125	465	777	105	226.87
GTPN48	48	125	465	830	105	256.09
GTPN54	54	125	465	884	105	300.62
GTPN72	72	125	465	1,046	105	375.79



### Metal TPN Boards 125A Accessories

Item	Description	Width mm	Height mm	Depth mm	Trade Price
GTPNH1	TPN header box 16 module	465	266	105	34.89
GTPNH2	Cable entry spreader box	465	206	105	23.51
GTPNH3	Cable entry meter box	465	206	105	22.75
GTPN-ADAPTOR	Adaptor TPN to S Phase				5.58
METAL BLANK	1 Mod Metal Blank				0.46
GCD100-4-03	4Pole 100A 30mA RCCB				244.30
GSV4125	4Pole 125A Isolator				43.36
GNM3TD-CT160	Multi function meter c/w 160CT (GNT160)				

MCB's & RCD's pages 6-10

## RESIDUAL CURRENT BREAKER with Overcurrent Protection (RCBO) 10kA

**Type A, 1P + N RCBO.** Certified to IEC 61009-1

### 2 Pole 10kA Curve - B

Item	Rated (A)	Modules	Poles	mA	For cable size mm <sup>2</sup>	Trade Price
RCBOLIB06A	6	1		30	1-6	40.49
RCBOLIB10A	10	1		30	1-6	40.49
RCBOLIB16A	16	1		30	1-6	40.49
RCBOLIB20A	20	1		30	1-6	40.49
RCBOLIB25A	25	1		30	1-6	40.49
RCBOLIB32A	32	1		30	1-6	40.49
RCBOLIB40A	40	1		30	1-6	43.22
RCBOLIB45A	45	1		30	1-6	43.22

### 2 Pole 10kA Curve - C

Item	Rated (A)	Modules	Poles	mA	For cable size mm <sup>2</sup>	Trade Price
RCBOLIC06A	6	1		30	1-6	40.49
RCBOLIC10A	10	1		30	1-6	40.49
RCBOLIC16A	16	1		30	1-6	40.49
RCBOLIC20A	20	1		30	1-6	40.49
RCBOLIC25A	25	1		30	1-6	40.49
RCBOLIC32A	32	1		30	1-6	40.49
RCBOLIC40A	40	1		30	1-6	43.22
RCBOLIC45A	45	1		30	1-6	43.22





# ENCLOSURES



IS 10101:2020  
COMPLIANT



CE CERTIFIED



ENHANCED  
PROTECTION



COMPREHENSIVE  
WARRANTIES

## ARGENTA METAL ENCLOSURES IP65

The ARGENTA Series comprises a group of metal enclosures suitable for housing switchgear, controlgear and other equipment used in the supply and distribution of electricity.

The enclosures are made with high quality materials in cold-rolled steel plate of up to 2mm thick and coated with RAL 7035 hardened epoxy-polyester paint.

### Metal Cabinets \* All cabinets complete with mounting plate

Item	Height mm	Width mm	Depth mm	Trade Price
GN302015-GO	300	200	150	68.54
GN302515-GO	300	250	150	70.02
GN303015-GO	300	300	150	73.33
GN403015-GO	400	300	150	89.86
GN403020-GO	400	300	200	96.52
GN404020-GO	400	400	200	108.15
GN504020-GO	500	400	200	122.43
GN504025-GO	500	400	250	129.63
GN604020-GO	600	400	200	127.63
GN604025-GO	600	400	250	144.34
GN604030-GO	600	400	300	158.67
GN606025-GO	600	600	250	196.41
GN606030-GO	600	600	300	220.93
GN705020-GO	700	500	200	194.31
GN806020-GO	800	600	200	229.28
GN806025-GO	800	600	250	236.22
GN806030-GO	800	600	300	265.91
GN808030-GO	800	800	300	335.39
GN806040-GO	800	600	400	309.86
GN1006025-GO	1000	600	250	322.93
GN1008030-GO	1000	800	300	379.54
GN1008040-GO	1000	800	400	433.38
GN1206030-GO	1200	600	300	459.18
GN1208040-GO	1200	800	400	479.67
GN12010030-GO	1200	1000	300	477.11



\*\* Other cabinet sizes available upon request

### Metal Cabinet Accessories

Item	For use with Cabinet	Trade Price
CH3025	Din Rail & Cover 2 Row x 8 Mod GN302515	76.51
CH4030	Din Rail & Cover 3 Row x 11 Mod GN403015-20	79.21
CH5040	Din Rail & Cover 3 Row x 16 Mod GN504015-20	86.43
CH6040	Din Rail & Cover 4 Row x 16 Mod GN604020	91.66
CH8060	Din Rail & Cover 5 Row x 26 Mod GN806020	96.53
SP250	Chassis fixing for 250mm box 250mm depth	32.47
SP300	Chassis fixing for 300mm box 300mm depth	34.51
GN48451	7mm Triangular Lock ALL	25.70
GN48456	Quarter Turning Lock with Key ALL	12.90
GN48457	Quarter Turn Key Lock ALL	25.70
GNKEY	7mm Plastic Key ALL	1.28
GN-48423	Wall bracket for Argenta Enclosures	9.86
BRASSBAR1M	Neutral or Earth Bar 6.5 x 9 x 1000mm 153 way	20.74
KKS1-2	Supports for N-E Terminal Bar (1 metre)	1.13



### TECHNICAL DATA

Degree of protection  
Resistance to impact  
Range of temperature  
Maximum voltage

IP65  
IK09  
-25-+40°C  
1000V

EN 62208; EN 60439-1-3; 2006-95-CE directive

## POLYESTER ENCLOSURES IP66

### Enclosures IP66

Item	IP Rating	Height mm	Width mm	Depth mm	Trade Price
POL302514	66	300	250	140	102.72
POL403020	66	400	300	200	133.97
POL404020	66	400	400	200	155.40
POL504020	66	500	400	200	193.85
POL604023	66	600	400	230	220.66
POL605023	66	600	500	230	241.79
POL806030	66	800	600	300	397.35



### Modular Chassis

Item	Cabinet Reference	Modules	Rows	Trade Price
PCH4030	POL403020	24	2	79.38
PCH4040	POL404020	36	2	81.83
PCH5040	POL504020	54	3	102.51
PCH6040	POL604023	54	3	117.65
PCH6050	POL605023	69	3	142.41
PCH8060	POL806030	116	4	171.41



Chassis 2 row 36 mod

### Accessories

Item	Description	Suitability	Trade Price
SP250	Chassis fixing for 250mm box	250mm depth	32.47
SP300	Chassis fixing for 300mm box	300mm depth	34.51
GN48451	7mm Triangular Lock	ALL	25.70
GN48456	Quarter Turning Lock with Key	ALL	12.90
GN48457	Quarter Turn Key Lock	ALL	25.70
GNKEY	7mm Plastic Key	ALL	1.28
POL29222	Wall bracket for POL Enclosures		17.20

### Backplate - Metal

Item	Trade Price
PML3025	5.08
PML4030	7.26
PML4040	9.48
PML5040	15.23
PML6040	15.39
PML6050	37.64
PML8060	41.97

### Backplate - Polyester

Item	Trade Price
PPL3025	10.24
PPL4030	14.57
PPL4040	18.65
PPL5040	26.00
PPL6040	31.69
PPL6050	37.29
PPL8060	57.55

### TECHNICAL DATA

Degree of protection  
Glow wire rating  
Resistance to impact  
Colour

IP66  
960° C  
IK10  
RAL 9002



## FLUSH METAL ENCLOSURES

Item	Description	Height mm	Width mm	Depth mm	Trade Price
NIM1-14	1 Row 14 Mod Metal Flush Board	35A	268	312	146.44
NIM1-20	1 Row 20 Mod Metal Flush Board	35A	268	395	170.90
NIM2-28	2 Row 28 Mod Metal Flush Board	50A	393	312	169.31
NIM2-40	2 Row 40 Mod Metal Flush Board	50A	393	395	202.55
NIM3-42	3 Row 42 Mod Metal Flush Board	50A	518	312	188.55
NIM3-60	3 Row 60 Mod Metal Flush Board	50A	518	395	251.34
NIM3-75	3 Row 75 Mod Metal Flush Board	50A	518	492	282.02
NIM80-4	4 Row 80 Mod Metal Flush Board	50A	718	395	319.59
NIM100-5	5 Row 100 Mod Metal Flush Board	50A	843	395	348.14



NIM 3-42

## JUNCTION BOXES IP67

### Junction Boxes with plain sides

Item	IP Rating	Height mm	Width mm	Depth mm	Trade Price
EL111	67	108	108	64	3.22
EL161	67	116	162	76	5.15
EL171	67	151	175	95	8.26
EL231	67	180	241	95	11.06
EL322	67	239	328	129	28.28



Junction Box plain sides

## INSPECTION WINDOWS PLASTIC - IP54

Windows are of compact (robust) design and are made of shock-resistant polycarbonate. Ideally suited for mounting by panel builder our range of hinged windows are designed to suit 4 - 18 modules (17.5mm). Windows are hinged to open 180° with holder included for holding window open when required.

Mounting frame made of shock-resistant polycarbonate with integrated gasket for flange mounting. All metal parts are corrosion-resistant. Integrated free position for lead seal.

Item	Modules	a mm	b mm	c mm	d mm	Weight grams	Trade Price
9006 504	4	92	65	72		97	17.81
9006 506	6	128	51	108		127	18.41
9006 509	9	182	78	162		166	24.03
9006 514	13	253	41	73	233	223	28.84
9006 518	18	344	105	324		299	33.14

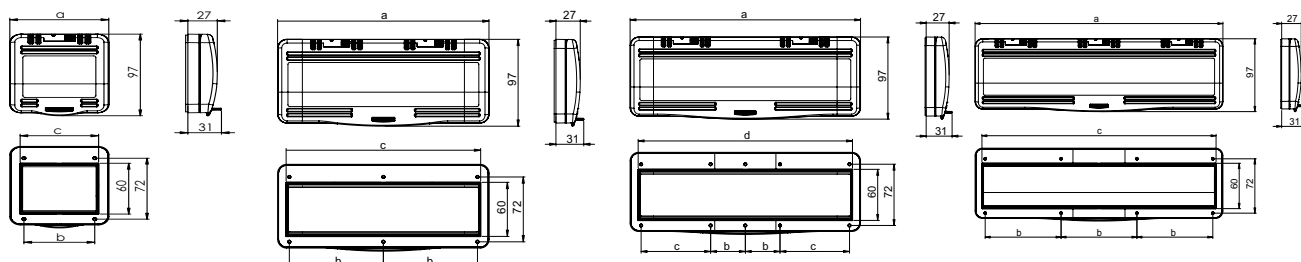


4 Mod window

6 & 9 Mod windows

13 Mod window

18 Mod window



## PLASTIC ENCLOSURES

Our range of distribution enclosures come with transparent reversible doors which can be sealed.

They are made from halogen free long-lasting plastic material and are equipped with dust caps, for wall mounting screws, and 1-4 quick locking secured screws.

Enclosures have supports for fixing mounting plates. Cable entries are metric.

Item	Description	IP Rating	Width mm	Height mm	Depth mm	Trade Price
BT2 - GO	1 x 2 Mod Enclosure	20	53	133	80	2.56
BT4 - GO	1 x 4 Mod Enclosure	20	100	133	85	3.98
BV4PTRR - GO	1 x 4 Mod Enclosure	40	180	228	120	17.07
BV8PTRR - GO	1 x 8 Mod Enclosure	40	105	228	191	22.89
CDN 4G	1 x 3 Mod Enclosure	65	84	174	111	19.00
GCUT 4	1 x 4 Modules DIN Rails	65	166	231	113	25.30
GCUT 6	1 x 6 Modules DIN Rails	65	202	231	113	29.22
GCUT 8	1 x 8 Modules DIN Rails	65	238	231	118	33.42
GCUT 112	1 x 12 Modules DIN Rails	65	310	246	148	40.36
GCUT 118	1 x 18 Modules DIN Rails	65	418	246	148	63.45
GCUT 224	2 x 12 (24) Modules DIN Rails	65	310	436	148	67.38
GCUT 236	2 x 18 (36) Modules DIN Rails	65	418	436	148	90.50
GCUT 336	3 x 12 (36) Modules DIN Rails	65	310	586	148	93.05
GCUT 354	3 X 18 (54) Modules DIN Rails	65	418	586	148	130.63
** Din rails can be mounted at two different heights						
GCUT N - E	N + E Bar for GCUT 112 - GCUT 354					17.98



BT2 - GO



BT 4 - GO



GCUT 4



GCUT 6



GCUT 112



GCUT 224



GCUT 336

### GCUT TECHNICAL DATA

Degree of protection	IP65	Glow wire rating	650° C
Resistance to impact	IK08	Ball pressure test	70° C
Auto-extinguishing degree	HB (UL94)		

According to 2006-95-CE directive and EN 60439-1 and UNE-EN 60439-3 norms on affected parts.

## DISTRIBUTION ENCLOSURES IP 40 - IP41

### GM Metal Enclosures

Item	IP Rating	Modules	Rows	Width mm	Height mm	Depth mm	Trade Price
GM 1-6	40	6	1	320	250	95	17.98
GM 1-14	40	14	1	335	300	111	100.70
GM 1-25	40	25	1	515	300	111	140.09
GM 2-28	40	28	2	335	425	111	132.12
GM 2-50	40	50	2	515	425	111	206.96
GM 3-42	40	42	3	335	550	111	154.43
GM 3-75	40	75	3	515	550	111	259.48
GM KEYLOCK	Lock and key set for GM boards (except GM 1-6)						23.64



GM1-14

### MSI Metal Enclosures \*\*

Item	IP Rating	Modules	Rows	Width mm	Height mm	Depth mm	Trade Price
MSI 36-1C	40	36	3	315	530	145	258.28
MSI 48-1C	40	48	4	315	680	145	289.74
MSI 90-2C	40	90	3	610	530	145	355.96
MSI 120-2C	40	120	4	610	680	145	423.84
MSSKL	Lock and key set for MSI cabinets						34.74
TFSO	Flat Flange Size 11						6.05



MSI 36-1C

\*\* MSI Enclosures are supplied without Flanges - please order separately

### Plastic Enclosures - surface mounting

Item	IP Rating	Modules	Rows	INTERNAL			EXTERNAL		Trade Price
				Width mm	Height mm	Depth mm	Width mm	Height mm	
CDN4G		4	1				84	174	19.00
G1-13	41	14	1				300	245	36.21
G1-18		18	1				395	235	24.68
G2-26	41	26	2				300	370	42.89
G2-36		36	2				395	360	34.88
G3-39	41	42	3				300	495	67.49



G2-26

### Plastic Enclosures - flush mounting c/w metal door

Item	IP Rating	Modules	Rows	Width mm	Height mm	Depth mm	Trade Price
SIL 14 PO-PH	41	14	1	368	343	93	60.66
SIL 28 PO-PH	41	28	2	368	443	93	69.53
SIL 42 PO-PH	41	42	3	368	568	93	98.41
SIL 56 PO-PH	41	56	4	368	753	93	145.38
SIL 70 PO-PH	41	70	5	314	849	93	271.78



BV12PO-GO

Item	Internal "cut-out" Dimensions			External Dimensions		
	Width mm	Height mm	Depth mm	Width mm	Height mm	Depth mm
SIL 14 PO-PH	314	314	86	368	343	93
SIL 28 PO-PH	314	414	86	368	443	93
SIL 42 PO-PH	314	539	86	368	568	93
SIL 56 PO-PH	314	724	86	368	753	93
SIL 70 PO-PH	314	849	86	368	878	93



SIL 14 PO-VO



# ENCLOSED SWITCHGEAR



IS 10101:2020  
COMPLIANT



CE CERTIFIED



ENHANCED  
PROTECTION



COMPREHENSIVE  
WARRANTIES

## SAFETY SWITCHES ENCLOSED - AC & SOLAR DC - IP65 ABS

### Polycarbonate Safety Switches - Grey Body - Red Yellow Handle - 3 Pole

Item	Rating (A)	Poles	IP Rating	Width mm	Height mm	Depth mm	Trade Price
SS 320 IP65	20	3	65	100	125	72	23.89
SS 325 IP65	25	3	65	100	125	72	25.67
SS 332 IP65	32	3	65	100	125	72	28.15
SS 340 IP65	40	3	65	125	175	90	32.57
SS 363 IP65	63	3	65	125	175	90	33.59
SS 380 IP65	80	3	65	190	280	130	70.83
SS 3100 IP65	100	3	65	190	280	130	88.28
SS 3125 IP65	125	3	65	190	280	130	100.96



SS 320 IP65

### Polycarbonate Safety Switches - Grey Body - Red Yellow Handle - 4 Pole

Item	Rating (A)	Poles	IP Rating	Width mm	Height mm	Depth mm	Trade Price
SS 420 IP65	20	4	65	100	125	72	26.75
SS 425 IP65	25	4	65	100	125	72	28.74
SS 432 IP65	32	4	65	100	125	72	29.91
SS 440 IP65	40	4	65	125	175	90	36.44
SS 463 IP65	63	4	65	125	175	90	38.33
SS 480 IP65	80	4	65	190	280	130	76.06
SS 4100 IP65	100	4	65	190	280	130	92.19
SS 4125 IP65	125	4	65	190	280	130	106.98



SS 440 IP65

### Safety Switches - AUX Modules

Item	Trade Price	
RAC20	20A AUX Module	3.09
RAC25	25A AUX Module	3.09
RAC32	32A AUX Module	3.09
RAC40	40A AUX Module	3.09
RAC63	63A AUX Module	3.09
RAC80	80A AUX Module	7.76



SS 4100 IP65

### SOLAR DC Isolators

Item	Rating (A)	Poles	IP Rating	Trade Price
SS 416 IP65 DC	16	2	65	25.63
SS 432 IP65 DC	32	4	65	39.87



SS 416 IP65 DC

### ENCLOSED DC CONTACTORS

Item	Rating (A)	Width mm	Height mm	Depth mm	Trade Price
KNL16 PV600C	16A	151	175	155	262.66

## ISOLATOR SWITCHES ENCLOSED IP53 - IP65 METAL

### Metalclad Isolator Switches - IP53

Item	Rating (A)	Poles	IP Rating	Width mm	Height mm	Depth mm	Trade Price
SW 20 IP53M	20	3	53	110	147	70	25.90
SW 32 IP53M	32	3	53	135	220	85	43.14
SW 40 IP53M	40	3	53	135	220	85	44.93
SW 63 IP53M	63	3	53	135	220	85	46.05
SW 80 IP53M	80	3	53	245	315	125	93.67
SW 100 IP53M	100	3	53	245	315	125	101.05
SW 125 IP53M	125	3	53	245	315	125	109.53



SW 20 IP53M

### Polyester Isolator Switches - IP65

Item	Rating (A)	Poles	IP Rating	Width mm	Height mm	Depth mm	Trade Price
SW 63 IP65P	63	3	65	250	300	150	358.47
SW 125 IP65P	125	3	65	300	400	200	522.24
SW 160 IP65P	160	3	65	300	400	200	592.67
SW 200 IP65P	200	3	65	400	400	200	625.50
SW 250 IP65P	250	3	65	400	400	200	660.65
SW 400 IP65P	400	3	65	400	500	200	802.59
SW 630 IP65P	630	3	65	400	600	230	1,002.90

## ISOLATOR SWITCHES ENCLOSED IP55 METAL

### Metalclad Isolator Switches 3 Pole - IP55

Item	Rating (A)	Poles	Enclosure Size	IP Rating	Width mm	Height mm	Depth mm	Trade Price
GSW363 IP55M	63	3	1	55	300	200	150	163.64
GSW3125 IP55M	125	3	2	55	400	300	200	303.34
GSW3200 IP55M	200	3	2	55	400	300	200	350.72
GSW3250 IP55M	250	3	2	55	400	300	200	491.13
GSW3400 IP55M	400	3	3	55	600	500	250	721.88



GSW3200 IP55M

\*\*above 400A available on request \*\*

### Metalclad Isolator - IP55 Accessories

Item	Cable Entry/ Cable Exit	For Distribution Use
Enclosure size 1	GN302015	GN302515 + CH3025 (2 x 8 mods)
Enclosure size 2	GN403020	GN403020 + CH4030 (3 x 11 mods)
Enclosure size 3	GN605025	GN604020 + CH6040 (4 x 16 mods)
Enclosure size 4	GN504025	GN504020 + CH5040 (3 x 16 mods)

## ISOLATOR SWITCHES ENCLOSED IP55 POLYESTER

### Metalclad Isolator Switches 4 Pole - IP55

Item	Rating (A)	Poles	Enclosure Size	IP Rating	Width mm	Height mm	Depth mm	Trade Price
GSW463 IP55M	63	4	1	55	200	300	150	170.28
GSW4125 IP55M	125	4	2	55	300	400	200	319.33
GSW4200 IP55M	200	4	2	55	300	400	200	416.55
GSW4250 IP55M	250	4	3	55	300	400	200	522.03
GSW4400 IP55M	400	4	4	55	500	600	250	763.19

### Metalclad Isolator - IP55 Accessories

Item	Cable Entry/ Cable Exit	For Distribution Use
Enclosure size 1	GN302015	GN302515 + CH3025 (2 x 8 mods)
Enclosure size 2	GN403020	GN403020 + CH4030 (3 x 11 mods)
Enclosure size 3	GN605025	GN604020 + CH6040 (4 x 16 mods)
Enclosure size 4	GN504025	GN504020 + CH5040 (3 x 16 mods)

## FUSE SWITCHES - ENCLOSED IP55 - BS Type METAL

### Metalclad Fuse Switches 3 Pole - IP55

Item	Rating (A)	Poles	Fuse Size	Enclosure Size	IP Rating	Width mm	Height mm	Depth mm	Trade Price
GFS332 IP55MBS	32	3	A1	1	55	300	200	150	233.07
GFS363 IP55MBS	63	3	A2-A3	2	55	400	300	200	349.63
GFS3100 IP55MBS	100	3	A4	3	55	400	300	200	402.34
GFS3125 IP55MBS	160	3	A3-A4	3	55	400	300	200	413.29
GFS3200 IP55MBS	200	3	B1-B2	3	55	600	500	250	762.13
GFS3400 IP55MBS	400	3	B1-B4	4	55	600	500	250	962.67



FS332 IP55BS

### Metalclad Fuse Switch - IP55 Accessories

Item	Cable Entry/ Cable Exit	For Distribution Use
Enclosure size 1	GN302015	GN302515 + CH3025 (2 x 8 mods)
Enclosure size 2	GN403020	GN403020 + CH4030 (3 x 11 mods)
Enclosure size 3	GN605025	GN604020 + CH6040 (4 x 16 mods)
Enclosure size 4	GN504025	GN504020 + CH5040 (3 x 16 mods)

## FUSE SWITCHES - NH TYPE - ENCLOSED IP65 METAL

### Polyester Fuse Switches - IP65

Item	Rating (A)	Poles	IP Rating	Width mm	Height mm	Depth mm	Trade Price
FS63 IP65P	63	3	65	250	300	140	532.27
FS125 IP65P	125	3	65	300	400	200	618.91
FS160 IP65P	160	3	65	300	400	200	633.34
FS250 IP65P	250	3	65	500	600	230	938.63
FS400 IP65P	400	3	65	600	800	300	1,283.17



FS332 IP55NH

## FUSE SWITCHES -NH TYPE - ENCLOSED IP55 METAL

### Metalclad Fuse Switches 3 Pole - IP55

Item	Rating (A)	Poles	Enclosure Size	IP Rating	Width mm	Height mm	Depth mm	Trade Price
GFS363 IP55MNH	63	3	2	55	300	400	200	362.20
GFS3125 IP55MNH	125	3	3	55	300	400	200	517.86
GFS3160 IP55MNH	160	3	3	55	300	400	200	520.80
GFS3200 IP55MNH	200	3	4	55	500	600	250	951.43
GFS3250 IP55MNH	250	3	4	55	500	600	250	951.43
GFS3400 IP55MNH	400	3	4	55	500	600	250	1,127.39

\*\*above 400A available on request \*\*



FS3250 IP55NH

### Metalclad Fuse Switch - IP55 Accessories

Item	Cable Entry/ Cable Exit	For Distribution Use
Enclosure size 1	GN302015	GN302515 + CH3025 (2 x 8 mods)
Enclosure size 2	GN403020	GN403020 + CH4030 (3 x 11 mods)
Enclosure size 3	GN605025	GN604020 + CH6040 (4 x 16 mods)
Enclosure size 4	GN504025	GN504020 + CH5040 (3 x 16 mods)



## CHANGEOVER SWITCHES - ENCLOSED IP53 - IP55 - IP65

### Metalclad Changeover Switches - IP53

Item	Rating (A)	Poles	IP Rating	Width mm	Height mm	Depth mm	Trade Price
CO 25 IP53M	25	3	53	220	270	117	89.38
CO 32 IP53M	32	3	53	220	270	117	90.81
CO 40 IP53M	40	3	53	220	270	117	96.56
CO 63 IP53M	63	3	53	220	270	117	101.52
CO 80 IP53M	80	3	53	250	370	130	188.93
CO 100 IP53M	100	3	53	250	370	130	199.07
CO 125 IP53M	125	3	53	250	370	130	214.24



CO 80 IP53M

### Metalclad Changeover Switches - IP55

GCO 3 125 IP55M	125	3	55	500	400	250	718.91
GCO 3 160 IP55M	160	3	55	500	400	250	761.21
GCO 3 200 IP55M	160	3	55	500	400	250	967.68
GCO 3 250 IP55M	250	3	55	500	400	250	1,005.75
GCO 3 400 IP55M	400	3	55	500	400	250	1,306.33



CO 160 IP55M

### Polyester Changeover Switches - IP65

CO 25 IP65P	25	4	65	190	280	130	100.39
CO 32 IP65P	32	4	65	190	280	130	104.44
CO 40 IP65P	40	4	65	190	280	130	107.80
CO 63 IP65P	63	4	65	190	280	130	112.90
CO 80 IP65P	80	4	65	342	253	129	238.71
CO 100 IP65P	100	4	65	342	253	129	251.88
CO 125 IP65P	125	4	65	300	200	140	581.70
CO 160 IP65P	160	4	65	400	500	200	838.49
CO 250 IP65P	250	4	65	400	600	230	1,083.09



CO 63 IP65P

## METAL CLAD SWITCHGEAR

### Meter Box

Item	Description	Rating (A)	Width mm	Height mm	Depth mm	Trade Price
ESBCT4	ESB CT Chamber	250A	500	500	250	423.38

### Metalclad Enclosed Switchgear Link Box Complete- IP65

Item	Description	IP	Width mm	Height mm	Depth mm	Trade Price
LINKBOX70	5 x 16sq - 120sq Link Box	65	320	395	175	302.33
LINKBOX185	5 x 70sq - 185sq Link Box	65	320	395	175	414.39

## ACCESSORIES

Item	Description	Trade Price
NPE 35	Neutral - Earth Terminal 35mm	12.69
NPE 120	Neutral - Earth Terminal 120mm	40.72
TBN185	Neutral - Earth Terminal 185mm	57.62
SEAL	Sealing Screw 5mm	2.19
SEALKIT	GPK Sealing Kit	15.80



NPE35



NPE120

## DISCONNECTORS

### FUSE SWITCH DISCONNECTS

Item	Rating (A)	Size	Trade Price
GKVL-00	160A	3 Pole NH00	45.91
GKVL-1	250A	3 Pole NH1	137.62
GKVL-2	400A	3 Pole NH2	218.60
GKVL-3	630A	3 Pole NH3	289.09



707.037.001

### FUSE DISCONNECTORS

Item	Rating (A)	Poles	Size	Trade Price
EFD 101P	32A	1	10 x 38	3.29
EFD 102P	32A	2	10 x 38	7.21
EFD 103P	32A	3	10 x 38	10.38
EFD 221P	100A	1	22 x 58	12.66
EFD 223P	100A	3	22 x 58	40.98



EFD 101P



EFD 103P



EFD 221P



EFD 223P

## FUSES - Cylindrical - DO

### DO Fuses gG(gl)

Item	Rating (A)	Type	Trade Price
6NZ01	6	DO1	0.65
20NZ02	20	DO2	0.65
25NZ02	25	DO2	0.65
35NZ02	35	DO2	0.65
50NZ02	50	DO2	0.87
63NZ02	63	DO2	0.87



63NZ02

### Fuses Cylindrical

Item	Rating (A)	Type	Size	Trade Price
FUSE 2A	2	10 X 38	0	1.01
FUSE 4A	4	10 X 38	0	0.63
FUSE 6A	6	10 X 38	0	0.72
FUSE 10A	10	10 X 38	0	0.52
FUSE 16A	16	10 X 38	0	0.94
FUSE 20A	20	10 X 38	0	0.94
FUSE 25A	25	10 X 38	0	1.01
FUSE 32A	32	10 X 38	0	1.01
MS63	63	22 X 58	2	3.11
MS80	80	22 X 58	2	3.11
MS100	100	22 X 58	2	3.11



FUSE 6A

## FUSES NH 120kA gL-gC

Item	Rating (A)	Trade Price
<b>NH00C</b>		
NV00C 6A	6	3.74
NV00C 10A	10	3.74
NV00C 16A	16	3.74
NV00C 20A	20	3.74
NV00C 25A	25	2.93
NV00C 35A	35	2.93
NV00C 40A	40	2.93
NV00C 50A	50	2.93
NV00C 63A	63	2.85
NV00C 80A	80	3.30
NV00C 100A	100	3.30
<b>NH00</b>		
NV00 125A	125	4.36
NV00 160A	160	4.36
<b>NH1</b>		
NV1 200A	200	8.26
NV1 250A	250	8.26
<b>NH1C</b>		
NV1C 63A	63	5.82
NV1C 80A	80	5.82
NV1C 100A	100	5.82
NV1C 125A	125	5.82
NV1C 160A	160	5.82
<b>NH2C</b>		
NV2C 63A	63	9.27
NV2C 80A	80	9.27
NV2C 100A	100	9.27
NV2C 125A	125	9.27
NV2C 160A	160	9.01
NV2C 200A	200	9.27
NV2C 250A	250	9.27
<b>NH2</b>		
NV2 315A	315	10.49
NV2 355A	355	10.49
NV2 400A	400	10.49
<b>NH3C</b>		
NV3C 250A	250	16.35
NV3C 315A	315	16.35
NV3C 355A	355	16.35
NV3C 400A	400	16.35
<b>NH3</b>		
NV3 500A	500	18.27
NV3 630A	630	18.27
<b>NH4</b>		
NV4 630A	630	68.94
NV4 800A	800	68.94
NV4 1000A	1000	72.71





# ELECTRIC VEHICLE CHARGING



DYNAMIC  
LOAD  
BALANCING



SMART  
METERING



COMPREHENSIVE  
WARRANTIES



MONITORING  
SOLUTIONS



SEAI & OLEV  
GRANT  
APPROVED



## Domestic Wall Mounted Charger - GLB Standard OCPP / OLEV

	Standard	OCPP / OLEV
	GLBDC	GLB-B
Basic Charging	Y	Y
Socket or Tethered Option(5m Cable)	Either	Either
Motorised Interlock	Y	Y
Output Options 6 - 32A set by dip switch	Y	Y
Available output range set by dip switch	7.4 kW	7.4 kW
Metering	O	Y
Dynamic Load Balancing	Y	Y
Input for timer / low tariff selection	Y	Y
Built-in DC Leakage Control	Y	Y
Wi-Fi Module	O	Lan
Communication	WiFi / Lan	Lan
RFID access control	O	O
Cloud Reporting system	G Cloud	OCPP
OCPP	-	1.5 / 1.6



## Domestic Wall Charger Standard

Item	Model Type & Connection	Trade Price
<b>DLM &amp; DC Monitoring</b>		
GLBDC-T222 WO	7.4 kW Socket Type 2	950.00
GLBDC-T222 FC	7.4 kW Fixed Lead Type 2	1,000.00
<b>DC Monitoring &amp; PEN Fault Protection</b>		
GLBDC-T274WOPME	7.4 kW Socket Type 2	1,000.00
GLBDC-T274FCPME	7.4 kW Fixed Lead Type 2	1,050.00



FOR ACCESSORIES SEE PAGE 46

## Domestic Wall Charger OCPP / OLEV

### OCPP/OLEV DC Monitoring & PEN Fault Protection

GLBBDCMT274WOLPE	7.4 kW Socket Type 2	1,569.70
GLBBDCMT274FCLPE	7.4 kW Fixed Lead Type 2	1,632.20

## ELECTRICAL VEHICLE DISTRIBUTION BOARDS (18th Edition)

Item	Enclosure	Total Modules	Free Modules	Incoming	PEN Fault Detection	DLM	Trade Price
G2EV40	G2-2	2	0	RCBO A	-	-	53.75
G4EV40	G4-4	4	2	RCBO A	-	-	56.50
G6EV40PME	G6-6	6	0	RCBO A	Yes	-	216.00
G6EVPME	G6-6	6	0	Terminals	Yes	-	200.00
G6EVPME132	G6-6	6	0	MCB	Yes	-	202.00
G8EV40PMEB	G8S6	8	0	RCBO B	Yes	-	508.00
GC6EV40PME	GCUT6	6	0	RCBO A	Yes	-	235.80
G10EV40PMEDLMA	G10S8	10	1	RCBO A	Yes	Yes	458.95
G12EV40PMEDLMB	G12S10	12	1	RCBO B	Yes	Yes	800.00



G8EV40PMEB

## Commercial Wall Mounted Charger - GLB

### Standard

### OCPP / OLEV

	GLBDC	GLB-B
Basic Charging	Y	Y
Socket or Tethered Option(5m Cable)	Either	Either
Motorised Interlock	Y	Y
Output Options 6 - 32A set by dip switch	Y	Y
Available output range set by dip switch	3.7kW - 22kW	3.7kW - 22kW
Optional Pillar	O	O
Master Slave configuration - max 32 chargers	Y	Y
Metering	O	O
Dynamic Load Balancing	Y	Y
Input for timer / low tariff selection	Y	Y
Built-in DC Leakage Control	Y	Y
Wi-Fi Module	O	O
Communication	WiFi / Lan	4G / WiFi / Lan
RFID access control	O	Y
Cloud Reporting system	O	OCPP
OCPP		1.5 / 1.6

O Optional Extra



Item	Model Type & Connection	Trade Price
------	-------------------------	-------------

### Standard - DLM & DC Monitoring

GLBDC-T222WO	3.7 kW - 22 kW Socket Type 2	950.00
GLBDC-T222FC	3.7 kW - 22 kW Fixed Lead Type 2	1,000.00

### OCPP/OLEV DC Monitoring

GLB-B-DCMT274WOL	Socket Type 2 7.4 kW	1,834.00
GLB-B-DCMT274FCL	Fixed Lead Type 2 7.4 kW	2,308.00

### OCPP / OLEV DLM & DC Monitoring

GLB-B-DCMT222WOL	Socket Type 2 22kW RFID LAN	1,834.00
GLB-B-DCMT222WOM	Socket Type 2 22kW RFID 4G	2,308.00



FOR ACCESSORIES SEE PAGE 46

## DUAL WALL MOUNTED CHARGER - GTB STANDARD

	GTB	GTB With Meters	GTB With Meters & WiFi
Mode 3 Charging	Y	Y	Y
Socket or Tethered Option (FC)	Y	Y	Y
Motorised Interlock	Y	Y	Y
Output Options 6 - 32A (set by dipswitch)	Y	Y	Y
Available Output Range 7.4kW - 22kW	Y	Y	Y
Pillar Mounting	O	O	O
Primary Secondary Configuration (max 32 chargers)	Y	Y	Y
Metering	O	Y	Y
Dynamic Load Balancing *	Y	Y	Y
Input for timer / low tariff selection	Y	Y	Y
Built-in DC Leakage Control	Y	Y	Y
Wi-Fi Interface	-	-	Y
RFID access control	O	O	O
Cloud Reporting System	O	O	O

“O” Optional Extra

\* Note: Dynamic Load Balancing requires meter GNM3D-RS485 or GNM1D-100-RS485 (sold separately)

Item	Model Type & Connection	Trade Price
------	-------------------------	-------------

### GTB (Standalone or Secondary)

GTBDC-T274WO-A	Single Phase 7.4KW Twin Charger with Type11 Sockets	2,494.92
GTBDC-T274FC-A	Single Phase 7.4KW Twin Charger with Type11 Leads	3,015.70
GTBDC-T222WO-A	Three Phase 22KW Twin Charger with Type11 Sockets	2,535.42

### GTB with Meters (Standalone or Secondary)

GTBDCM-T274WO-A	Single Phase 7.4KW Twin Charger with Meters & Type11 Sockets	2,637.42
GTBDCM-T274FC-A	Single Phase 7.4KW Twin Charger with Meters & Type11 Leads	3,158.22
GTBDCM-T222WO-A	Three Phase 22KW Twin Charger with Meters & Type11 Sockets	2,911.66

### GTB with Meters & WiFi (Standalone or Primary)

GTBDCMW-T274WO-A	Single Phase 7.4KW Twin Charger with WiFi, Meters & Type11 Sockets	2,820.16
GTBDCMW-T274FC-A	Single Phase 7.4KW Twin Charger with WiFi, Meters & Type11 Leads	3,340.94
GTBDCMW-T222WO-A	Three Phase 22KW Twin Charger with WiFi, Meters & Type11 Sockets	3,094.38

FOR ACCESSORIES SEE PAGE 46



## STREET CHARGER - LS4

## OCPP / OLEV

	LAN & LANC	MC & MCC	AU & AUC
Basic Charging	Y	Y	Y
Type 2 Sockets	x 2	x 2	x 2
Motorised Interlock	Y	Y	Y
Output Factory Set	Y	Y	Y
Dynamic Load Balancing (see external meters below)	Y	Y	Y
Metering	Y	Y	Y
Core Balanced Protection (no nuisance tripping)	Y	Y	Y
Full Open OCPP	Y	Y	Y
PC Browser Interface	Y	Y	Y
LAN	Y	O	O
Wi-Fi	Y	Y	Y
RFID access control	Y	Y	Y
DC Leakage Protection	Y	Y	Y
Suitable for Wall Mounting		Y	Y
Comprehensive Cloud Reporting system	Y	Y	Y
4G Built in Modem		Y	Y
Auto Reclosing MCB / RCCB			Y



Item	Description	Trade Price
<b>Standard (Tall) LAN Versions</b>		
LS4DCMT274WO-LAN	2 x 7.4kw Outlets Metered, LAN & RFID	5,245.00
LS4DCMT222WO-LAN	2 x 22kw Outlets Metered, LAN & RFID	5,366.00
<b>Standard (Tall) 4G Versions</b>		
LS4DCMT274WO-MC	2 x 7.4kw Outlets Metered, RFID & 4G	5,650.00
LS4DCMT222WO-MC	2 x 22kw Outlets Metered, RFID & 4G	5,868.00
<b>Compact Lan Versions</b>		
LS4DCMT274WO-LANC	Compact 2 x 7.4kw Outlets Metered, LAN & RFID	5,245.00
LS4DCMT222WO-LANC	Compact 2 x 22kw Outlets Metered, LAN & RFID	5,366.00
<b>Compact 4G Versions</b>		
LS4DCMT274WO-MCC	Compact 2 x 7.4kw Outlets Metered, RFID & 4G	5,650.00
LS4DCMT222WO-MCC	Compact 2 x 22kw Outlets Metered, RFID & 4G	5,868.00
<b>AUTO</b>		
	Self Closing RCBO / RCCB	
LS4M-T222W 4G AU	2 x 22kw Outlets Metered, RFID & 4G	6,640.00
LS4M-T222W 4G AUC	Compact 2 x 22kw Outlets Metered, RFID & 4G	6,640.00



Compact

FOR ACCESSORIES SEE PAGE 46



## EV ACCESSORIES

Item	Description				Trade Price
------	-------------	--	--	--	-------------

<b>Meters</b>		<b>GLB</b>	<b>GTB</b>	<b>LS4</b>	
GNM1D-RS485	Single phase local Meter 45 Amps	X	X		74.65
GNM1D-100-RS485	Single Phase DLM Meter 100 Amp	X	X		140.77
GNM3D-RS485	Three Phase DLM or local Meter 63 Amps	X	X	X	158.41
DLM200	Three Phase CT DLM Meter 200 Amps	X	X	X	700.49
DLM250	Three Phase CT DLM Meter 250 Amps			X	700.49
DLM400	Three Phase CT DLM Meter 400 Amps			X	700.49



<b>Communication &amp; Access</b>		<b>GLB</b>	<b>GTB</b>	<b>LS4</b>	
RFID Cards	Pack of 5 RFID cards	X	X	X	58.58
RFID Tags	Pack of 5 RFID Tags	X	X	X	58.58
GLB-WIFI	WIFI Module for GLB	X			311.99
GLB-RFID	RFID module for GLB	X			107.18
GTB-RFIDKIT	Dual RFID Module for GTB		X		170.48



<b>Wall Brackets</b>		<b>GLB</b>	<b>GTB</b>	<b>LS4</b>	
GTB-WB	GTB Wall Bracket (Required for 22KW)		X		46.04
VF-LS4	Ground/Wall Mounted Pedestal LS4			X	75.16

<b>Ground Mounts</b>		<b>GLB</b>	<b>GTB</b>	<b>LS4</b>	
ST-GHL	Single Charger Freestanding Pillar	X			544.27
ST-GHL-D	Double Charger Freestanding Pillar	X			582.17
GTB-PB-TUBE60	GTB Post Bracket 60mm (to be used with MVRP or MVRF)		X		57.42
MVRF	In Ground Fixing post 1550mm	X	X	X	106.85
MVRP	Plate mounted post 750mm for GTB		X		74.16
GTB-PB-OVAL	GTB Post Bracket ( to be used with MVR-AV)		X		113.08
MVR-AB	Plate Mounted post Oval for GTB		X		254.21



ST-GHL

<b>EV Charging Cables</b>		<b>GLB</b>	<b>GTB</b>	<b>LS4</b>	
CCM32T2T1-5	Type 2 to Type 1 32A 240V 5 Meter EV Charging Cable	X	X	X	375.94
CCM32T2T2-5	Type 2 to Type 2 32A 240V 5 Meter EV Charging Cable	X	X	X	349.71
CCM32T2T2-8	Type 2 to Type 2 32A 240V 8 Meter EV Charging Cable	X	X	X	378.86
CCT32T2T2-5	Type 2 to Type 2 32A 400V 5 Meter EV Charging Cable	X	X	X	378.86
CCT32T2T2-8	Type 2 to Type 2 32A 400V 8 Meter EV Charging Cable	X	X	X	437.14



## QC24 - 24KW DC RAPID EV CHARGING STATION

- Charges EV cars in less than 1 hour (typically)
- One charging output, either CCS Combo or CHAdeMO
- Compact design for fast & economic installation
- Maintenance free cooling system without air filter
- Compatible with all AC networks, 1-Phase & 3-Phase
- Robust design for outdoor use (IP 55 / IK 10)
- Dual Modem for separate operation & maintenance activities
- OCPP1.6 compliant for Smart Charging
- Front panel & user menu are customisable
- Wall pedestal mounted

### Main Applications:

- Car Dealerships
- Service Centres
- Enterprise fleet
- Utility vehicle fleet



## QC50 - 50KW DC RAPID EV CHARGING STATION

Quickly recharges the battery from 20% to 80% on most electric car batteries in just 20 minutes

- Premium solution for public charging environments
- 360° Lighting strip allows users to see the units charging status
- Strong and corrosion resistant metal cover
- Simple Touch Screen
- Easy to use, reliable & durable
- Full Control with RFID
- Customisable with your branding
- 1 x CHAdeMO Tethered Lead, 1 x CCS Tethered Lead
- OCPP1.6 compliant for Smart Charging
- Weight: 280 kg
- Mounted: Floor
- Dimensions: 1,955 mm[H] x 600 mm[W] x 540 mm[D]

### Main Applications

- Service Stations
- Shopping Centres



**Contact our EV Experts to discuss your requirements and pricing options**

## BACK OFFICE SOLUTIONS

## G-CLOUD SMART CHARGING &amp; MONITORING SOFTWARE

*When you want full control over all Electric Vehicle Charging in apartment buildings, workplaces and beyond...*

G-Cloud is GARO's proprietary web-based measurement collection service.

G-Cloud offers a clear charge monitoring solution, RFID management, information on energy consumption, user and period statistics, reports and payment data for GARO charge points.

**DIVIDED USER STATISTICS** - Each user receives an RFID tag that allows access to the nominated chargers.

For the user, there is access to statistics on electricity consumption for their own electric car as well as the opportunity to manage their tags.

**VALUE ENERGY MONITORING** - For the property owner, G-Cloud's measurement values create a specified basis that allows you to divide the payment between individual users. In addition, the energy monitoring of each charger, user and period provides valuable data for the evaluation of each charging point's use rate and location.

G-Cloud can be connected to both new or existing charging systems with GARO charging points GLBDC & GTBDC. Please note this is a non OCPP product, G-Cloud has been developed exclusively for GARO's EV Charging range.

**Talk to our EV experts to learn more and to arrange a closer look at G-Cloud!**



## OCPP SOFTWARE SOLUTION

**What is OCPP?**

OCPP stands for Open Charge Point Protocol. This protocol allows charge points (hardware) and charge point software to talk to each other. Some companies use proprietary programming languages that can only communicate between their own charging stations. This will NOT allow them to talk to other companies charge points.

**Why OCPP?**

A major advantage of OCPP is that you're not locked into one vendor/software provider for the life of the product. OCPP allows you to mix and match EV charging points and software from different providers. If you're thinking of expanding your EV network but prefer the network capabilities from a different software provider then you will have the choice to combine various charge point manufactures with one software option.

**GAROs OCPP Offerings**

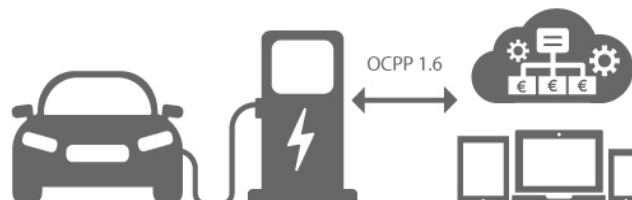
Garo offers a number of EV Charge points configured with OCPP technology and ready to integrate to a payment & monitoring software solution.

Garo also provides a complete OCPP back office solution.

**Software Features**

- Overview/Dashboards
- Network and Device Status
- Fault Management with intelligent Alerting strategies (SMS, email)
- Remote Management – control of devices, software update deployment
- Access Control and management through card (RFID), Smartphone App or SMS options
- Billing & Revenue generation – tariffs, payment systems and accounting

**Contact us to discuss your requirements and to arrange a demo of our software solution.**





# CEE PLUGS & SOCKETS



EXCEPTIONAL  
VALUE



CE CERTIFIED



WEATHER  
PROOF



STRONG &  
DURABLE

**IP44**

**Plugtops**

Item	Pins	Poles	Operating Voltage V	Frequency Hz	Clock Pos	Colour Code	Package size	Trade Price
P216-4S	3	2p + E	100-130	50-60	4	■	10	3.49
P216-6S	3	2p + E	200-250	50-60	6	■	10	3.41
P232-4S	3	2p + E	100-130	50-60	4	■	10	10.92
P232-6S	3	2p + E	200-250	50-60	6	■	10	10.92
P416-6S	5	3p + N + E	200-415	50-60	6	■	10	7.45
P432-6S	5	3p + N + E	200-415	50-60	6	■	10	12.16



P216 - 6S

**Couplers**

S216-4S	3	2p + E	100-130	50-60	4	■	10	5.67
S216-6S	3	2p + E	200-250	50-60	6	■	10	5.67
S232-4S	3	2p + E	100-130	50-60	4	■	10	13.14
S232-6S	3	2p + E	200-250	50-60	6	■	10	13.14
S416-6S	5	3p + N + E	200-415	50-60	6	■	10	11.38
S432-6S	5	3p + N + E	200-415	50-60	6	■	10	14.04



S 216-4S

**Wall Sockets**

UI216-4S-RU	3	2p + E	100-130	50-60	4	■	10	7.48
UI216-6S-RU	3	2p + E	200-250	50-60	6	■	10	7.48
UI232-4S-RU	3	2p + E	100-130	50-60	4	■	10	14.04
UI232-6S-RU	3	2p + E	200-250	50-60	6	■	10	14.04
UI416-6S-RU	5	3p + N + E	200-415	50-60	6	■	10	11.38
UI432-6S-RU	5	3p + N + E	200-415	50-60	6	■	10	15.93



UI 232-6 S-RU

**IP67**

**Plugtops**

Item	Pins	Poles	Operating Voltage V	Frequency Hz	Clock Pos	Colour Code	Package size	Trade Price
PV216-4S	3	2p + E	100-300	50-60	4	■	10	7.34
PV216-6S	3	2p + E	200-250	50-60	6	■	10	7.34
PV232-4S	3	2p + E	100-130	50-60	4	■	10	13.05
PV232-6S	3	2p + E	200-250	50-60	6	■	10	13.37
PV416-6S	5	3p + N + E	200-415	50-60	6	■	2	9.76
PV432-6S	5	3p + N + E	200-415	50-60	6	■	2	15.80



PV 316-4S

**Couplers**

SV216-4S	3	2p + E	100-300	50-60	4	■	10	9.99
SV216-6S	3	2p + E	200-250	50-60	6	■	10	9.99
SV232-4S	3	2p + E	100-130	50-60	4	■	10	17.40
SV232-6S	3	2p + E	200-250	50-60	6	■	10	17.40
SV416-6S	5	3p + N + E	200-415	50-60	6	■	10	13.05
SV432-6S	5	3p + N + E	200-415	50-60	6	■	10	20.56



SV 316-6S

**Wall Sockets**

UIV216-4S-RU	3	2p + E	100-300	50-60	4	■	5	14.83
UIV216-6S-RU	3	2p + E	200-250	50-60	6	■	5	14.83
UIV232-4S-RU	3	2p + E	100-130	50-60	4	■	5	19.90
UIV232-6S-RU	3	2p + E	200-250	50-60	6	■	5	19.90
UIV416-6S-RU	5	3p + N + E	200-415	50-60	6	■	5	16.83
UIV432-6S-RU	5	3p + N + E	200-415	50-60	6	■	5	22.63



IUV 316-6S - RU

## PLUGS 16A - 63A IP44

Connectable cable size:

16A, 1-2,5 mm<sup>2</sup>

32A, 2,5-6 mm<sup>2</sup>

63A, 6 -16 mm<sup>2</sup>

Degree of protection IP44

Accessories:

16A Cover Type TL216S

32A Cover Type TL232S

63A Cover Type TL63S



P216 - 6S



P463 - 6S

Item	Poles	Operating Voltage V	Frequency Hz	Clock pos. Colour code	Package size	Trade Price
P 216-4 S		100-130	50-60	4 <span style="color: yellow;">■</span>	10	3.49
P 216-6 S		200-250	50-60	6 <span style="color: blue;">■</span>	10	3.41
P 232-4 S	3 2p + E	100-130	50-60	4 <span style="color: yellow;">■</span>	10	10.92
P 232-6 S		200-250	50-60	6 <span style="color: blue;">■</span>	10	10.92
P 263-6 S		200-250	50-60	6 <span style="color: blue;">■</span>	2	33.87
P 316-4 S		100-130	50-60	4 <span style="color: yellow;">■</span>	10	6.69
P 316-6 S	4 3p + E	380-415	50-60	6 <span style="color: red;">■</span>	10	6.69
P 332-6 S		380-415	50-60	6 <span style="color: red;">■</span>	10	11.51
P 363-6 S		380-415	50-60	6 <span style="color: red;">■</span>	2	34.73
P 416-6 S		200-415	50-60	6 <span style="color: red;">■</span>	10	7.45
P 432-6 S	5 3p + N + E	200-415	50-60	6 <span style="color: red;">■</span>	10	12.16
P 463-6 S		200-415	50-60	6 <span style="color: red;">■</span>	2	36.43

Other clock positions are produced to order.

## PLUGS WATERTIGHT 16A - 125A IP67

Connectable cable size:

16A 1-2,5 mm<sup>2</sup>

32A 2,5-6 mm<sup>2</sup>

63A 6-16 mm<sup>2</sup>

125A 16-50 mm<sup>2</sup>

Degree of protection IP67

Accessories: Cover



PV 316-6S



PV 316-4S

Item	Poles	Operating Voltage V	Frequency Hz	Clock pos. Colour code	Package size	Trade Price
PV 216-4S		100-300	50-60	4 ■	10	7.34
PV 216-6S		200-250	50-60	6 ■	10	7.34
PV 232-4S		100-130	50-60	4 ■	10	13.05
PV 232-6S	3 2p + E	200-250	50-60	6 ■	10	13.37
PV 263-4S		100-130	50-60	4 ■	2	32.12
PV 263-6S		200-250	50-60	6 ■	2	26.49
PV 2125-6S		200-250	50-60	6 ■	2	135.96
PV 316-4S		100-130	50-60	4 ■	10	8.70
PV 316-6S		380-415	50-60	6 ■	10	8.70
PV 332-4S	4 3p + E	100-130	50-60	4 ■	10	14.03
PV 332-6S		380-415	50-60	6 ■	10	14.03
PV 363-6S		380-415	50-60	6 ■	2	35.47
PV 3125-6S		380-415	50-60	6 ■	2	146.00
PV 416-6S		200-415	50-60	6 ■	10	9.76
PV 432-6S	5 3p + N + E	200-415	50-60	6 ■	10	15.80
PV 463-6S		200-415	50-60	6 ■	2	36.15
PV 4125-6S		200-415	50-60	6 ■	2	150.50

Other clock positions are produced to order.

## PLUGS ANGLED 16A and 32A IP44

Connectable cable size:

16A: 1-2,5 mm<sup>2</sup>

32A: 2,5-6 mm<sup>2</sup>

Degree of protection IP44



PA 216 - 6S

Type	Poles	Operating Voltage V	Frequency Hz	Clock pos. Colour code	Package size	Trade Price
PA 216-6 S	3 2p + E	200-250	50-60	6 ■	10	17.23
PA 416-4 S		100-130	50-60	4 ■	10	19.74
PA 416-6 S	5 3p + N + E	200-415	50-60	6 ■	10	18.97
PA 432-6 S		200-415	50-60	6 ■	10	27.11

## PHASE INVERTER 16A and 32A IP44

Connector size:

16A: 1-2,5 mm<sup>2</sup>

32A: 2,5-6 mm<sup>2</sup>

Degree of protection IP44.

Accessories:

Covers TL416S, TL432S



FV 416 - 6S

Type	Poles	Operating Voltage V	Frequency Hz	Clock pos. Colour code	Package size	Trade Price
FV 316-6 S	4 2p + N + E	380-415	50-60	6 ■	10	17.43
FV 416-6 S	5 3p + N + E	200-415	50-60	6 ■	10	17.43
FV 432-6 S	5 3p + N + E	200-415	50-60	6 ■	10	18.43

Other clock positions are produced to order.



## COUPLERS 16A - 63A IP44

Connectable cable size:

16A: 1-2,5 mm<sup>2</sup>

32A: 2,5-6 mm<sup>2</sup>

63A: 6-16 mm<sup>2</sup>

Degree of protection IP44



S 216-6S



S 216-4S

Type	Poles	Operating Voltage V	Frequency Hz	Clock pos. Colour code	Package size	Trade Price
S 216-4 S	3 2p + E	100-130	50-60	4 <span style="color: yellow;">■</span>	10	5.67
S 216-6 S		200-250	50-60	6 <span style="color: blue;">■</span>	10	5.67
S 232-4 S		100-130	50-60	4 <span style="color: yellow;">■</span>	10	13.14
S 232-6 S		200-250	50-60	6 <span style="color: blue;">■</span>	10	13.14
S 263-6 S	4 3p + E	200-250	50-60	6 <span style="color: blue;">■</span>	2	33.19
S 316-4 S		100-130	50-60	4 <span style="color: yellow;">■</span>	10	7.10
S 316-6 S		380-415	50-60	6 <span style="color: red;">■</span>	10	7.10
S 332-6 S		380-415	50-60	6 <span style="color: red;">■</span>	10	13.73
S 363-6 S	5 3p + N + E	380-415	50-60	6 <span style="color: red;">■</span>	2	33.19
S 416-6 S		200-415	50-60	6 <span style="color: red;">■</span>	10	11.38
S 432-6 S		200-415	50-60	6 <span style="color: red;">■</span>	10	14.04
S 463-6 S		200-415	50-60	6 <span style="color: red;">■</span>	2	36.26

Other clock positions are produced to order.

## COUPLERS WATERTIGHT 16A - 125A IP67

Waterproof design

Connectable cable size:

16A: 1-2,5 mm<sup>2</sup>

32A: 2,5-6 mm<sup>2</sup>

63A: 6-16 mm<sup>2</sup>

125A: 16-50 mm<sup>2</sup>

Degree of protection IP67



SV 332-4S



SV 316-6S

Type	Poles	Operating Voltage V	Frequency Hz	Clock pos. Colour code	Package size	Trade Price
SV 216-4S	3 2p + E	100-130	50-60	4	10	9.99
SV 216-6S		200-250	50-60	6	10	9.99
SV 232-4S		100-130	50-60	4	10	17.40
SV 232-6S		200-250	50-60	6	10	17.40
SV 263-4S		100-130	50-60	4	2	51.15
SV 263-6S		200-250	50-60	6	2	38.28
SV 2125-6S	4 3p + E	200-250	50-60	6	2	164.17
SV 316-4S		100-130	50-60	4	10	12.71
SV 316-6S		380-415	50-60	6	10	11.37
SV 332-6S		380-415	50-60	6	10	18.51
SV 363-6S		380-415	50-60	6	2	41.26
SV 3125-6S		380-415	50-60	6	2	158.92
SV 416-6S	5 3p + N + E	200-415	50-60	6	10	13.05
SV 432-6S		200-415	50-60	6	10	20.56
SV 463-6S		200-415	50-60	6	2	50.46
SV 4125-6S		200-415	50-60	6	2	171.53

Other clock positions are produced to order.

## WALL SOCKET 16A - 63A IP44

For wall and machine mounting with cable connection from top & back

Connectable cable size:

16A: 1-2,5 mm<sup>2</sup>. Solid cable 1-4 mm<sup>2</sup>

32A: 2,5-6 mm<sup>2</sup>. Solid cable 2,5-10 mm<sup>2</sup>

63A: 6-16 mm<sup>2</sup> and solid cable 6-25 mm<sup>2</sup>

Supplied with cable gland entry

Degree of protection IP44



UI 232-6 S-RU

Type	Poles	Operating Voltage V	Frequency Hz	Clock pos. Colour code	Package size	Trade Price
UI 216-4 S - RU	3 2p + E	100-130	50-60	4 <span style="color: yellow;">■</span>	10	7.48
UI 216-6 S - RU		200-250	50-60	6 <span style="color: blue;">■</span>	10	7.48
UI 232-4 S - RU		100-130	50-60	4 <span style="color: yellow;">■</span>	10	14.04
UI 232-6 S - RU		200-250	50-60	6 <span style="color: blue;">■</span>	10	14.04
UI 263-6 S - RU	4 3p + E	200-250	50-60	6 <span style="color: blue;">■</span>	2	45.17
UI 316-4 S - RU		100-130	50-60	4 <span style="color: yellow;">■</span>	10	12.93
UI 316-6 S - RU		380-415	50-60	6 <span style="color: red;">■</span>	10	9.28
UI 332-6 S - RU		380-415	50-60	6 <span style="color: red;">■</span>	10	14.32
UI 363-6 S - RU	5 3p + N + E	380-415	50-60	6 <span style="color: red;">■</span>	2	47.98
UI 416-6 S - RU		200-415	50-60	6 <span style="color: red;">■</span>	10	11.38
UI 432-6 S - RU		200-415	50-60	6 <span style="color: red;">■</span>	10	15.93
UI 463-6 S - RU		200-415	50-60	6 <span style="color: red;">■</span>	2	51.40

### Wall sockets with double entry



UI 216-4 DE-RU

Type	Poles	Operating Voltage V	Frequency Hz	Clock pos. Colour code	Package size	Trade Price
UI 216-4 DE - RU	3 2p + E	100-130	50-60	4 <span style="color: yellow;">■</span>	10	12.31
UI 216-6 DE - RU		200-250	50-60	6 <span style="color: blue;">■</span>	10	10.26
UI 232-6 DE - RU		200-250	50-60	6 <span style="color: blue;">■</span>	10	16.64
UI 263-6 S - RU		200-250	50-60	6 <span style="color: blue;">■</span>	2	45.17
UI 316-6 DE - RU	4 3p + E	380-415	50-60	6 <span style="color: red;">■</span>	10	14.84
UI 332-6 DE -RU		380-415	50-60	6 <span style="color: red;">■</span>	10	17.29
UI 363-6 S - RU		380-415	50-60	6 <span style="color: red;">■</span>	2	47.98
UI 416-6 DE - RU		200-415	50-60	6 <span style="color: red;">■</span>	10	15.95
UI 432-6 DE - RU	5 3p + N + E	200-415	50-60	6 <span style="color: red;">■</span>	10	19.89
UI 463-6 S - RU		200-415	50-60	6 <span style="color: red;">■</span>	2	51.40

Other clock positions are produced to order.

## WALL SOCKET WATERTIGHT 16A - 125A IP67

For wall mounting with cable connection from top & back

Connectable cable size:

16A: 1-2,5 mm<sup>2</sup> & Solid cable 1-4 mm<sup>2</sup>

32A: 2,5-10 mm<sup>2</sup> & Solid cable 2,5-10 mm<sup>2</sup>

63A: 6-16 mm<sup>2</sup> & Solid cable 6-25 mm<sup>2</sup>

125A: 5 x 50 mm<sup>2</sup> to terminal block

Flexible 16-50 mm<sup>2</sup> and solid cable 16-70 mm<sup>2</sup>

Degree of protection IP67



UIV 316-6S - RU

Type	Poles	Operating Voltage V	Frequency Hz	Clock pos. Colour code	Package size	Trade Price
UIV 216-4S - RU	3 2p + E	100-130	50-60	4	5	14.83
UIV 216-6S - RU		200-250	50-60	6	5	14.83
UIV 232-4S - RU		100-130	50-60	4	5	19.90
UIV 232-6S - RU		200-250	50-60	6	5	19.90
UIV 263-4S - RU		100-130	50-60	4	2	42.70
UIV 263-6S - RU		200-250	50-60	6	2	42.70
UIV 2125-6S - RU	4 3p + E	200-250	50-60	6	1	188.56
UIV 316-4S - RU		100-130	50-60	4	5	15.80
UIV 316-6S - RU		380-415	50-60	6	5	15.80
UIV 332-6S - RU		380-415	50-60	6	5	20.61
UIV 363-6S - RV		380-415	50-60	6	2	36.73
UIV 3125-6S - RU		380-415	50-60	6	1	193.37
UIV 416-6S - RU	5 3p + N + E	200-415	50-60	6	5	16.83
UIV 432-6S - RU		200-415	50-60	6	5	22.63
UIV 463-6S - RU		200-415	50-60	6	2	53.17
UIV 4125-6S - RU		200-415	50-60	6	1	234.56

Other clock positions are produced to order.

## WALL INLET 16A - 63A IP44

For wall mounting with cable connection possible from top & bottom

Connectable cable size:

16A: 1-2,5 mm<sup>2</sup> & Solid cable 1-4 mm<sup>2</sup>

32A: 2,5-6 mm<sup>2</sup> & Solid cable 2,5-10 mm<sup>2</sup>

63A: 6-25 mm<sup>2</sup>

Supplied with sealed gland entry M40

Degree of protection IP44.



II 232S - RI



II 216-4S - RI

Type	Poles	Operating Voltage V	Frequency Hz	Clock pos. Colour code	Package size	Trade Price
II 216-4 S - RI	3 2p + E	100-130	50-60	4	10	12.00
II 216-6 S - RI		200-250	50-60	6	10	12.00
II 232-4 S - RI		100-130	50-60	4	10	14.88
II 232-6 S - RI	4 3p + E	200-250	50-60	6	10	14.51
II 263-6 S - RI		200-250	50-60	6	2	46.57
II 316-4 S - RI		100-130	50-60	4	10	11.36
II 316-6 S - RI	5 3p + N + E	380-415	50-60	6	10	12.48
II 332-6 S - RI		380-415	50-60	6	10	16.05
II 416-6 S - RI		200-415	50-60	6	10	12.79
II 432-6 S - RI	6	200-415	50-60	6	10	25.46
II 463-6 S - RI		380-415	50-60	6	2	56.46

Other clock positions are produced to order.

## WALL INLET WATERTIGHT 16A - 125A IP67

Waterproof inlet for wall mounting

Connectable cable size:

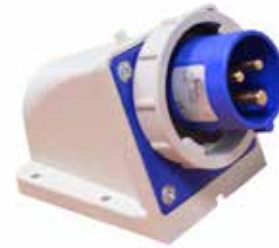
16A: 1-2,5 mm<sup>2</sup> & 1-4 mm<sup>2</sup> for solid cable

32A: 2,5-6 mm<sup>2</sup> & for solid cable 2,5-10 mm<sup>2</sup>

63A: 6-16 mm<sup>2</sup> & for solid cable 6-25 mm<sup>2</sup>

125A: 16-50 mm<sup>2</sup> & for solid cable 16-70 mm<sup>2</sup>

Degree of protection IP67.



IIV 216-6S - RI



IIV 463-6S - RI

Type	Poles	Operating Voltage V	Frequency Hz	Clock pos. Colour code	Package size	Trade Price
IIV 216-4S - RI	3 2p + E	100-130	50-60	4 <span style="color: yellow;">■</span>	10	25.56
IIV 216-6S - RI		200-250	50-60	6 <span style="color: blue;">■</span>	10	25.56
IIV 232-4S - RI		100-130	50-60	4 <span style="color: yellow;">■</span>	10	34.44
IIV 232-6S - RI		200-250	50-60	6 <span style="color: blue;">■</span>	10	34.44
IIV 263-4S - RI		100-130	50-60	4 <span style="color: yellow;">■</span>	2	84.44
IIV 263-6S - RI		200-250	50-60	6 <span style="color: blue;">■</span>	2	77.35
IIV 2125-6 - RI	4 3p + E	200-250	50-60	6 <span style="color: blue;">■</span>	1	196.62
IIV 332-6S - RI		380-415	50-60	6 <span style="color: red;">■</span>	10	49.60
IIV 363-6S - RI		380-415	50-60	6 <span style="color: red;">■</span>	2	52.69
IIV 3125-6S - RI		380-415	50-60	6 <span style="color: red;">■</span>	1	212.24
IIV 416-6S - RI		200-415	50-60	6 <span style="color: red;">■</span>	10	29.45
IIV 432-6S - RI		200-415	50-60	6 <span style="color: red;">■</span>	10	61.99
IIV 463-6S - RI	5 3p + N + E	200-415	50-60	6 <span style="color: red;">■</span>	2	83.81
IIV 4125-6S - RI		200-415	50-60	6 <span style="color: red;">■</span>	1	256.88

Other clock positions are produced to order.

## CONNECTION OUTLETS - 3 WAY 16A IP44

With IEC-CEE 16A socket inlet and 3 x 16A socket outlets  
 Connectable cable size: 1,5-4 mm<sup>2</sup>  
 Degree of protection IP44



Type	Poles	Connectors	Operating Voltage V	Frequency Hz	Clock pos.- Colour code	Package size	Trade Price
P3 S216-4S	3	3 x 16A socket outlets	110-130	50-60	4 <span style="color: yellow;">■</span>	1	56.93
P3 S216-6S	3	3 x 16A socket outlets	200-250	50-60	6 <span style="color: blue;">■</span>	1	51.77

## CONNECTION OUTLETS - 3 WAY 16A IP67

With IEC-CEE 16A socket inlet and 3 x 16A socket outlets  
 Connectable cable size: 1,5-4 mm<sup>2</sup>  
 Degree of protection IP67



Type	Poles	Connectors	Operating Voltage V	Frequency Hz	Clock pos. Colour code	Package size	Trade Price
PV3 S216-4S	3	3 x 16A socket outlets	110-130	50-60	4 <span style="color: yellow;">■</span>	1	74.17
PV3 S216-6S	3	3 x 16A socket outlets	200-250	50-60	6 <span style="color: blue;">■</span>	1	69.15

## ADAPTOR 16A - 13A BS IP44

With IEC-CEE 16A socket inlet & 3-pin BS 13A socket outlet  
 Connectable cable size: 1,5-4 mm<sup>2</sup>  
 Degree of protection IP44



Type	Poles	Operating Voltage V	Frequency Hz	Clock pos. Colour code	Package size	Trade Price
II216-6-13A	3	200-250	50-60	6 <span style="color: blue;">■</span>	10	22.79

Other clock positions are produced to order.

## PANEL MOUNTED SOCKET WITH STRAIGHT MOUNTING PLATE 16A - 63A IP44

For panel mounting

Connectable cable size:

16A: 1-2,5 mm<sup>2</sup> & solid cable 1-4 mm<sup>2</sup>.

32A: 2,5-6 mm<sup>2</sup> & solid cable 2,5-10 mm<sup>2</sup>

63A: 6-16 mm<sup>2</sup> & solid cable 6-25 mm<sup>2</sup>

Degree of protection IP44



UIL 216-6S



UI 316-4S

Type	Poles	Operating Voltage V	Frequency Hz	Clock pos. Colour code	Package size	Trade Price
UIL 216-4 S	3 2p + E	100-130	50-60	4	10	4.50
UIL 216-6 S		200-250	50-60	6	10	4.11
UI 216-4 S		100-130	50-60	4	10	4.46
UI 216-6 S		200-250	50-60	6	10	4.11
UI 232-4 S		100-130	50-60	4	10	6.16
UI 232-6 S		200-250	50-60	6	10	5.73
UI 263-4 S	4 3p + E	100-130	50-60	4	2	46.13
UI 263-6 S		200-250	50-60	6	2	35.47
UI 316-6 S	5 3p + N + E	380-415	50-60	6	10	5.12
UI 332-6 S		380-415	50-60	6	10	6.41
UI 363-6 S		380-415	50-60	6	2	34.19
UI 416-6 S	6 3p + N + E	200-415	50-60	6	10	5.33
UI 432-6 S		200-415	50-60	6	10	7.60
UI 463-6 S		200-415	50-60	6	2	37.61

Other clock positions are produced to order.



## PANEL MOUNTED SOCKET WITH ANGLED MOUNTING PLATE 16A - 63A IP44

For panel mounting

Connectable cable size:

16A: 1-2,5 mm<sup>2</sup> & 1-4 mm<sup>2</sup> for solid cable

32A: 2,5-6 mm<sup>2</sup> & 2,5-10 mm<sup>2</sup> for solid cable

63A: 6-16 mm<sup>2</sup> & 6-25 mm<sup>2</sup> for solid cable

Degree of protection IP44



UIS 316-6S



UIS 263-6S

Type	Poles	Operating Voltage V	Frequency Hz	Clock pos.- colour code	Package size	Trade Price
UIS 216-4 S	3 2p + E	100-130	50-60	4 <span style="color: yellow;">■</span>	10	4.50
UIS 216-6 S		200-250	50-60	6 <span style="color: blue;">■</span>	10	4.11
UIS 232-4 S		100-130	50-60	4 <span style="color: yellow;">■</span>	10	6.97
UIS 232-6 S		200-250	50-60	6 <span style="color: blue;">■</span>	10	6.16
UIS 263-6 S	4 3p + E	200-250	50-60	6 <span style="color: blue;">■</span>	2	33.92
UIS 316-6 S		380-415	50-60	6 <span style="color: red;">■</span>	10	5.65
UIS 332-6 S	5 3p + N + E	380-415	50-60	6 <span style="color: red;">■</span>	10	6.22
UIS 363-4 S		100-130	50-60	4 <span style="color: yellow;">■</span>	2	36.31
UIS 363-6 S		380-415	50-60	6 <span style="color: red;">■</span>	2	36.30
UIS 416-6 S	6	200-415	50-60	6 <span style="color: red;">■</span>	10	5.33
UIS 432-6 S		200-415	50-60	6 <span style="color: red;">■</span>	10	7.60
UIS 463-6 S		200-415	50-60	6 <span style="color: red;">■</span>	2	37.64

Other clock positions are produced to order.

## PANEL MOUNTED SOCKET WATERTIGHT - ANGLED MOUNTING PLATE 16A - 125A IP67

Watertight socket for panel mounting

Connectable cable size:

16A: 1-2,5 mm<sup>2</sup> & 1-4 mm<sup>2</sup> for solid cable

32A: 2,5-6 mm<sup>2</sup> & 2,5-10 mm<sup>2</sup> for solid cable.

63A: 6-16 mm<sup>2</sup> & 6-25 mm<sup>2</sup> for solid cable

125A: 16-50 mm<sup>2</sup> & 16-70 mm<sup>2</sup> for solid cable

Supplied with gasket

Degree of protection IP67



UIV 232-4S



UISV 263-6S

Type	Poles	Operating Voltage V	Frequency Hz	Clock pos. Colour code	Package size	Trade Price
UISV 216-4S	3 2p + E	100-130	50-60	4 <span style="color: yellow;">■</span>	10	10.23
UISV 216-6S		200-250	50-60	6 <span style="color: blue;">■</span>	10	9.87
UISV 232-4S		100-130	50-60	4 <span style="color: yellow;">■</span>	10	12.86
UISV 232-6S		200-250	50-60	6 <span style="color: blue;">■</span>	10	12.29
UISV 263-6S		200-250	50-60	6 <span style="color: blue;">■</span>	2	35.71
UISV 2125-6S		200-250	50-60	6 <span style="color: blue;">■</span>	2	67.20
UISV 316-6S	4 3p + E	380-415	50-60	6 <span style="color: red;">■</span>	10	10.59
UISV 332-6S		380-415	50-60	6 <span style="color: red;">■</span>	10	12.97
UISV 3125-6S		380-415	50-60	6 <span style="color: red;">■</span>	2	70.39
UISV 416-6S	5 3p + N + E	200-415	50-60	6 <span style="color: red;">■</span>	10	11.66
UISV 432-6S		200-415	50-60	6 <span style="color: red;">■</span>	10	14.03
UISV 463-6S		200-415	50-60	6 <span style="color: red;">■</span>	2	39.68
UISV 4125-6S		200-415	50-60	6 <span style="color: red;">■</span>	2	73.70

Other clock positions are produced to order.

## PANEL MOUNTED INLET WITH STRAIGHT MOUNTING PLATE 16A - 63A IP44

For panel mounting

Connectable cable size:

16A: 1,5-4 mm<sup>2</sup>

32A: 2,5-10 mm<sup>2</sup>

63A: 6-25 mm<sup>2</sup>

Degree of protection IP44



II 416-6S

Type	Poles	Operating Voltage V	Frequency Hz	Clock pos. Colour code	Package size	Trade Price
II 216-4 S	3 2p+E	100-130	50-60	4 <span style="color: yellow;">■</span>	10	4.95
II 216-6 S		200-250	50-60	6 <span style="color: blue;">■</span>	10	4.95
II 232-4 S		100-130	50-60	4 <span style="color: yellow;">■</span>	10	7.16
II 232-6 S		200-250	50-60	6 <span style="color: blue;">■</span>	10	7.17
II 263-6 S		200-250	50-60	6 <span style="color: blue;">■</span>	4	21.34
II 316-4 S	4 3p + E	100-130	50-60	4 <span style="color: yellow;">■</span>	10	6.16
II 316-6 S		380-415	50-60	6 <span style="color: red;">■</span>	10	6.16
II 332-6 S		380-415	50-60	6 <span style="color: red;">■</span>	10	7.81
II 416-6 S		200-415	50-60	6 <span style="color: red;">■</span>	10	6.16
II 432-6 S	3p+N+E	200-415	50-60	6 <span style="color: red;">■</span>	10	8.19

## PANEL MOUNTED INLET WATERTIGHT - ANGLED MOUNTING PLATE 63A + 125A IP67

Waterproof inlet for panel mounting

Connectable cable size:

63A: 6-16 mm<sup>2</sup> and for solid cable 6-25 mm<sup>2</sup>

125A: 16-50 mm<sup>2</sup> and for solid cable 16-70 mm<sup>2</sup>

Supplied with gasket

Degree of protection IP67



IIV 263-4

Type	Poles	Operating Voltage V	Frequency Hz	Clock pos. Colour code	Package size	Trade Price
IIV 263-4	3 2p + E	100-130	50-60	4 <span style="color: yellow;">■</span>	2	57.49
IIV 263-6		200-250	50-60	6 <span style="color: blue;">■</span>	2	42.24
IIV 2125-4		100-130	50-60	4 <span style="color: yellow;">■</span>	2	109.23
IISV 2125-6S		200-250	50-60	6 <span style="color: blue;">■</span>	2	91.01
IIV 363-6	4 3p + E	380-415	50-60	6 <span style="color: red;">■</span>	2	50.30
IIV 3125-6		380-415	50-60	6 <span style="color: red;">■</span>	2	105.22
IIV 463-6		200-415	50-60	6 <span style="color: red;">■</span>	2	50.30
IIV 4125-6	3p + N + E	200-415	50-60	6 <span style="color: red;">■</span>	2	96.38

Other clock positions are produced to order.

## COMBINATION UNITS 16A - 32A IP44



Type		Trade Price
<b>Wall Socket with 4 Module Window 16A-32A IP44</b>		
URBB 216-4S	16A 3PIN 110V SOCKET C/W 4MOD IP44	61.88
URBB 216-6S	16A 3PIN 230V SOCKET C/W 4MOD IP44	57.12
URBB 316-6S	16A 4PIN 400V SOCKET C/W 4 MOD IP44	58.14
URBB 416-6S	16A 5PIN 400V SOCKET C/W 4MOD IP44	58.48
<hr/>		
URBB 232-4S	32A 3PIN 110V SOCKET C/W 4MOD IP44	69.71
URBB 232-6S	32A 3PIN 230V SOCKET C/W 4MOD IP44	63.58
URBB 332-6S	32A 4PIN 400V SOCKET C/W 4 MOD IP44	63.92
URBB 432-6S	32A 5PIN 400V SOCKET C/W 4MOD IP44	64.26



Type		Trade Price
<b>Interlocked Socket Outlet IP44 16A-32A</b>		
UBB 216-4S	16A 3PIN 110V Switched Socket IP44	51.51
UBB 216-6S	16A 3PIN 230V Switched Socket IP44	49.30
UBB 316-6S	16A 4PIN 400V Switched Socket IP44	57.79
UBB 416-6S	16A 5PIN 400V Switched Socket IP44	58.48
<hr/>		
UBB 232-4S	32A 3PIN 110V Switched Socket IP44	52.53
UBB 232-6S	32A 3PIN 220V Switched Socket IP44	51.51
UBB 332-6S	32A 4PIN 400V Switched Socket IP44	54.40
UBB 432-6S	32A 5PIN 400V Switched Socket IP44	70.72

## INTERLOCKED SOCKETS OUTLETS WATERTIGHT 16A - 125A IP67

Watertight socket for wall mounting with cable connection from top & bottom

Connectable cable size:

16A: 1-2,5 mm<sup>2</sup> and for solid cable 1-4 mm<sup>2</sup>

32A: 2,5-6 mm<sup>2</sup> and for solid cable 2,5-10 mm<sup>2</sup>

63A: 6-16 mm<sup>2</sup> and for solid cable 6-25 mm<sup>2</sup>

125A: 50 mm<sup>2</sup>

Degree of protection IP67



UBV 3125-6



UBV 263-6SI

Type	Poles	Operating Voltage V	Frequency Hz	Clock pos. Colour code	Package size	Trade Price
<b>16A, 32A 63A</b>						
UBC 216-4S	3 2p + E	100-130	50-60	4 ■	1	70.55
UBC 216-6S		200-250	50-60	6 ■	1	70.55
UBC 232-4S		100-130	50-60	4 ■	1	74.13
UBC 232-6S		200-250	50-60	6 ■	1	74.13
UBV 263-6SI		200-250	50-60	6 ■	1	204.54
UBC 316-6S	4 3p + E	380-415	50-60	6 ■	1	72.03
UBC 332-6S		380-415	50-60	6 ■	1	79.11
UBV 363-6SI		380-415	50-60	6 ■	1	208.42
UBC 416-6S	5 3p + N + E	230-400	50-60	6 ■	1	75.87
UBC 432-6S		230-400	50-60	6 ■	1	85.73
UBV 463-6S		230-400	50-60	6 ■	1	214.17

Type	Poles	Operating Voltage V	Frequency Hz	Clock pos. Colour code	Package size	Trade Price
<b>125A</b>						
UBV 2125-6S	3 2p + E	200-250	50-60	6 ■	1	1,092.98
UBV 3125-6S	4 3p + E	380-415	50-60	6 ■	1	1,126.39
UBV 4125-6S	5 3p + N + E	200-415	50-60	6 ■	1	1,171.44

## INTERLOCKED COMBINATION UNITS WATERTIGHT 16A - 125A IP67

Combination unit with socket outlet in watertight design.  
 Cable connection possible from top and bottom.  
 Can be equipped with components up to a max of 5-8 modules. (100 mm).  
 Connectable cable size:

- 16A: 1-2,5 mm<sup>2</sup> and for solid cable 1-4 mm<sup>2</sup>
- 32A: 2,5-6 mm<sup>2</sup> and for solid cable 2,5-10 mm<sup>2</sup>
- 63A: 6-16 mm<sup>2</sup> and for solid cable 6-25 mm<sup>2</sup>
- 125A: 50 mm<sup>2</sup>

Degree of protection IP67.

Components sold separately.



URBBV 363-6S

Type	Poles	Module space for Components	Operating Voltage V	Clock pos. Colour code	Package size	Trade Price
------	-------	-----------------------------	---------------------	------------------------	--------------	-------------

### 16A

URBBV 216-4S	3	5	100-130	4 <span style="color: yellow;">■</span>	1	108.20
URBBV 216-6S	2p + E	5	200-250	6 <span style="color: blue;">■</span>	1	108.20
URBBV 316-6S	4 3p + E	5	380-415	6 <span style="color: red;">■</span>	1	110.87
URBBV 416-4S	5	5	100-130	4 <span style="color: yellow;">■</span>	1	114.41
URBBV 416-6S	3p + N + E	5	200-415	6 <span style="color: red;">■</span>	1	111.62

### 32A

URBBV 232-4S	3	5	100-130	4 <span style="color: yellow;">■</span>	1	158.66
URBBV 232-6S	2p + E	5	200-250	6 <span style="color: blue;">■</span>	1	162.63
URBBV 332-6S	4 3p + E	5	380-415	6 <span style="color: red;">■</span>	1	168.82
URBBV 432-6S	5 3p + N + E	5	200-415	6 <span style="color: red;">■</span>	1	173.92

### 63A

URBBV 263-6S	3 2p + E	7	200-250	6 <span style="color: blue;">■</span>	1	325.10
URBBV 363-6S	4 3p + E	7	380-415	6 <span style="color: red;">■</span>	1	328.89
URBBV 463-6S	5 3p + N + E	7	200-415	6 <span style="color: red;">■</span>	1	334.00

# GARO PRO SCENE



When there is a special requirement for top quality and invisibility e.g. at various events in the entertainment arena, there is a need for 'invisible' electricity. Cables, sockets and terminal boxes need to be discreet and not be seen.

GARO has a special range comprising the more commonly used plugs and couplers

Connectors are screw type simple connect as with the GARO Pro Range.

Degree of Protection:

IP44 16 - 32A

IP67 63 - 125 A

## PRO SCENE PLUGS & COUPLERS Type 16A & 32A IP44

Connectable cable size:

16A: 1-2,5 mm<sup>2</sup>

32A: 2,5-6 mm<sup>2</sup>

Degree of Protection IP44



S 216-6 S - B



P 316 - 6 S - B

## PRO SCENE PLUGS & COUPLERS 63A & 125A WATERTIGHT IP67

PLUGS & COUPLERS 63A and 125A

Connectable cable size:

63A: 6-16 mm<sup>2</sup>

125A: 16-50 mm<sup>2</sup>

Degree of protection IP67



S 4125 - 6 S+B



P 4125 6 S+B

## PRO SCENE PLUGS & COUPLERS Type 16A & 32A IP44

PLUGS IP44	Poles	Operating Voltage V	Frequency Hz	Clock pos. Colour code	Package size	Trade Price
<b>16 A</b>						
P 216-6 S-B	3- 2p+E	200-250	50-60	6 ■	10	4.73
P 316-6 S-B	4- 3p+E	380-415	50-60	6 ■	10	6.43
P 416-6 S-B	5- 3p+N+P	200-415	50-60	6 ■	10	6.71
<b>32 A</b>						
P 232-6 S-B	3- 2p+E	200-250	50-60	6 ■	10	8.94
P 332-6 S-B	4- 3p+E	380-415	50-60	6 ■	10	9.76
P 432-6 S-B	5- 3p+N+P	200-415	50-60	6 ■	10	10.08

COUPLERS IP44	Poles	Operating Voltage V	Frequency Hz	Clock pos. Colour code	Package size	Trade Price
<b>16 A</b>						
S 216-6 S-B	3- 2p+E	200-250	50-60	6 ■	10	6.71
S 316-6 S-B	4- 3p+E	380-415	50-60	6 ■	10	8.94
S 416-6 S-B	5- 3p+N+P	200-415	50-60	6 ■	10	10.04
<b>32 A</b>						
S 232-6 S-B	3- 2p+E	200-250	50-60	6 ■	10	11.72
S 332-6 S-B	4- 3p+E	380-415	50-60	6 ■	10	12.28
S 432-6 S-B	5- 3p+N+P	200-415	50-60	6 ■	10	13.12

## PRO SCENE PLUGS & COUPLERS 63A & 125A WATERTIGHT IP67

PLUGS IP67	Poles	Operating Voltage V	Frequency Hz	Clock pos. Colour code	Package size	Trade Price
<b>63 A</b>						
P 263-6 S-B	3- 2p+E	200-250	50-60	6 ■	2	44.13
P 363-6 S-B	4- 3p+E	380-415	50-60	6 ■	2	45.46
P 463-6 S-B	5- 3p+N+P	200-415	50-60	6 ■	2	51.29
<b>125 A</b>						
P 2125-6 S-B	3- 2p+E	200-250	50-60	6 ■	2	101.65
P 3125-6 S-B	4- 3p+E	380-415	50-60	6 ■	2	107.00
P 4125-6 S-B	5- 3p+N+P	200-415	50-60	6 ■	2	117.70

COUPLERS IP67	Poles	Operating Voltage V	Frequency Hz	Clock pos. Colour code	Package size	Trade Price
<b>63 A</b>						
S 263-6 S-B	3- 2p+E	200-250	50-60	6 ■	2	53.96
S 363-6 S-B	4- 3p+E	380-415	50-60	6 ■	2	55.74
S 463-6 S-B	5- 3p+N+P	200-415	50-60	6 ■	2	61.53
<b>125 A</b>						
S 2125-6 S-B	3- 2p+E	200-250	50-60	6 ■	2	111.44
S 3125-6 S-B	4- 3p+E	380-415	50-60	6 ■	2	117.70
S 4125-6 S-B	5- 3p+N+P	200-415	50-60	6 ■	2	129.27





**GARO**<sup>®</sup>

Sweden • Norway • Finland • Poland • Ireland • UK

GARO Electric Ltd  
Unit 19/307  
Northwest Business Park  
Ballycoolin  
Dublin 15

Tel: 01-8665360  
sales@garo.ie  
www.garo.ie

